

Users-Manual for DateBookUtil

Friday, February 16, 2001

by
Witkowski-Design, Edmund J. Witkowski III
©2000 Witkowski-Design, Edmund J. Witkowski III

Technical Support:

For any questions, comments, or suggestions
please e-mail Edmund J. Witkowski III anytime at **ed@witkowski-design.com**
or visit me at **www.Witkowski-Design.com**

Brief Summary:

DateBookUtil is similar to DateUtil, for those familiar with DateUtil, but now saves events and interacts with your DateBook. DateBookUtil is a Date Calculator. It will calculate the difference between two dates and display it in any combination you want (Years, Months, Weeks, and Days.) It will also calculate Past or Future dates relative to a starting date. In addition it has the ability to save your personal events in its own database as well as display your DateBook's Database entries.

- Save Birthdays, Weddings, Anniversaries and more in a Date List!
- Toggle between your DateBookUtil Date List and your Palm's DateBook.
- Edit your DateBook entries and alarms easily with DateBookUtil.
- Set alarms and cancel alarms from your DateBook.
- Transfer your Date List into your DateBook.
- Calculate # of days between two dates.
- Calculate a Past or Future Date from a Start Date.
- Choose dates from your Date List and DateBook to perform Calculations.

Table of Contents

Chapter 1 - Purchasing / Registering	4
Palm-Basics	4
Registering Program	5
Sending the Fee	5
Registration-Screen	5
Reg-Key	5
Upgrading Older Versions	6
Delete Old One	6
Overwrite Old One	6
Chapter 2 – DataBase and Data Loss	7
Database Files	7
Backup	7
Restoring	7
Location	7
Chapter 3 – Introduction Screen	8
Description	8
Continue Button	8
Manual	8
Register Button	8
Self-Check	8
Chapter 4 – Screen-1	9
Description	9
Calculations	9
Dates	9
Calendar Icons	9
Date Select Listbox	10
Past or Future Dates	10
Quantities Fields	10
WD Button	10
Clear Button	10
Intro Button	11

Type Listbox	11
List Items	11
DateBook	11
List	11
<i>Chapter 5 – Edit List Screen</i>	<i>12</i>
Description	12
Done Button	12
Type Listbox	12
List Items	12
DateBook	12
List	12
Add Button	13
Del Button	13
Date	13
Calendar Icon	13
Descr. Field	13
Clear Button	13
Note Field	13
Alarm Checkbox	13
Clock Icon	13
DateBook Button	14

Chapter 1 - Purchasing / Registering



Palm-Basics

Above is a diagram showing where the different buttons are and what they are called. The diagram's main purpose is as a guide for the next section on how to Register the program you purchased.

Registering Program Sending the Fee

For up-to-date instructions on how to pay the \$10 fee visit me at
<http://www.witkowski-design.com> .

Registration-Screen

A screenshot of a registration screen. At the top is a purple header bar with the text "Register Now!". Below this, the text reads: "To purchase this title please purchase it at my web-site: www.Witkowski-Design.com". This is followed by "FEE \$10" and "Your data is NOT lost!". Then, it says "Send Reference# when Registering." and "Reference # : EDMUNDWI". Below that is a label "Reg-Key : " followed by a dotted line and an upward-pointing arrow icon. At the bottom left is a button labeled "(exit)" and at the bottom right is a button labeled "(Register)".

Register Now!

To purchase this title please
purchase it at my web-site:
www.Witkowski-Design.com

FEE \$10

Your data is NOT lost!

Send Reference# when Registering.

Reference # : EDMUNDWI

Reg-Key : ↑

(exit) (Register)

A Reg-Key will unlock the 15-day limitation and allow the program to run indefinitely. In order for me to Generate your unique Reg-Key I need you to send me your REFERENCE# and which Palm-Model (PalmIII, PalmV, etc.) you use. The REFERENCE# is found on the Registration-Screen.

There are two ways to get to the Registration-Screen:

- 1) Allow the program to expire and the only screen it goes to is the Registration-Screen.
- 2) Hit the REGISTER button on the Introduction Screen. The REFERENCE# should be 8 Capital Letters and/or Numbers. In some instances it will say "No Ref#" which is a valid REFERENCE#.

Reg-Key

The Reg-Key must be entered in the Text-Field to the right of "Registration Code:" The Reg-Key is case sensitive and MUST be entered exactly as I give it to you. After entering the Reg-Key into the Text-Field press the REGISTER button. If you entered it incorrectly it will display INVALID. If you entered it correctly it will return to the application and refuse you further access to the Registration-Screen.

Upgrading Older Versions

Upgrading versions to applications you've already purchased are FREE, as long as the Reg-Key is still valid. Contact the programmer for further assistance. There are two ways to upgrade a newer version: Delete Old One or Overwrite Old One.

Don't forget to HotSync first to back up your database with your PC so you don't lose any saved data. Assuming you have your PalmDesktop Software set to Synchronize Palm and PC, or Palm overwrites PC, the 1st being the best choice, your database will be backed up on your PC during a HotSync.

Delete Old One

To delete ANY Palm application you must go to the Palm System Menu (see diagram) and choose DELETE. Then a list will appear showing all currently HotSynced programs. Choose the application name you want to DELETE (in this case DATEBOOKUTIL) and delete it. You are now ready to HotSync the new version into your Palm.

Overwrite Old One

As the Programmer/Developer, I often just HOTSynchronize the newer version of a program into my palm over top of the older version. This usually works, however, I have encountered times when it still sees the older version no matter how many times I HotSync the newer version over top of the older version. In this case, you must DELETE the older version BEFORE HotSyncing the newer version (see section-a above.)

Chapter 2 – DataBase and Data Loss

Database Files

There are 2 databases for DateBookUtil:

- 1) DtS1_db1.PDB screen settings.
- 2) DtS1_db2.PDB Database of events.

Backup

Everytime you HotSync your Palm in its cradle the database is backed-up on your PC, assuming your System Conduit is set to "HandHeld overwrite PC". This is good and bad. It is bad because it overwrites the PC files with the HandHeld files every time you HotSync, which could potentially overwrite good data with bad data. There is no conduit at this time. Conduits are a more sophisticated (and more complicated for both programmer and end-user to set-up) and allow for synchronization between both PC and Handheld (similar to your Address Book and MemoPad). What is happening here is a blind copy to your PC every HotSync.

Restoring

If you ever DELETE DateBookUtil or do a Hard-Reset you will need to re-HotSync DateBookUtil.PRC and then HotSync the PDB files into your Palm. This should restore everything.

Location

Where are they located? Well, your PalmDesktop Software sets up a Palm Folder and then in that folder sets up a USER-NAME folder and then in that folder sets up a BACKUP folder. Each installation can be customized and I can not say where it will be on everyone's, but I can say where it is on my PC. I took Default values and for my User-Name I choose "WitkowE", so my database files are located in:

C:\Palm\WitkowE\Backup

Chapter 3 – Introduction Screen



Description

The Introduction Screen contains the Title and the version # so you know if you have the latest version. At the bottom it shows developed by Witkowski-Design and lists an e-mail address Ed@Witkowski-Design.com and a web-site URL <http://www.Witkowski-Design.com> where updates can be found.

Continue Button

The **Continue** button will take you to the Main Screen where you can choose between the different Calculators. Hitting this button will continue with the data you were using the last time you used the program.

Manual

The **Manual** button brings up an onscreen Users-Manual.

Register Button

The **Register** button takes you to the Registration Screen where you enter your unique Reg-Key to unlock the 15-day limitation (for more information see Chapter 1 Section-ii for directions on Registering.)

Self-Check

The Self-Check verifies the program hasn't been altered since it was compiled. A Virus Warning Alert Box will pop-up if the Self-Check fails. If you purposely change the original size of the program and don't want the Alert Box popping up every time you start the program just turn the Self-Check off by removing the check from the CheckBox.

Chapter 4 – Screen-1

The screenshot shows a user interface for a date calculation application. At the top, there are two date selection rows. The first row shows a calendar icon, the date 'Tue Sep 29, 1992', and a 'Select' button with a downward arrow. The second row shows a calendar icon, the date 'Fri Feb 16, 2001', and a 'Select' button with a downward arrow. Below these is a section titled 'Quantities' with a list of items: 'Y' (checked) with a value of 8, 'M' (checked) with a value of 4, 'W' (unchecked) with a value of 18, and 'WD' (in a rounded box) with a value of 2188. At the bottom left of this section are two buttons: 'INTRO' (in a green box) and 'clear' (in a rounded box). To the right of the 'Quantities' section is a 'List Items' section with a downward arrow and a list of events: '...Edit List', 'Bought Car', 'Dog's Birthday' (highlighted in blue), 'Graduated Colle...', 'Moved into Apt.', and 'New Job' (with a downward arrow). At the bottom right of the screen is the date 'Tue Sep 29, 1992'.

Description

The first screen is the calculation screen where you perform all your date calculations. At the bottom right there is a list of recorded events from both your DateBookUtil database and your DateBook database.

Calculations

A calculation is performed whenever either Date at the top changes via the Calendar icon or whenever an item in the Select Listbox is selected.

Dates

There are two dates at the top that are always sorted, early date on top and later date on bottom. To change the dates, either select the calendar icon to the left of each date or select from the list box to their right. These dates auto-sort themselves each time a new date is selected.

Calendar Icons

There are two calendar icons in the top left of the screen, one next to each date. Tapping either will bring up a calendar allowing you to select a new date. The top calendar icon will change the top date and the bottom one will change the bottom date. But don't forget the dates auto-sort each time they are changed so they may swap on you so beware.

Date Select Listbox

There are 8 choices in the Select Listbox:

- 1) **Today's Date** - makes the date the current date
- 2) **Get List Item** - Whichever is selected in the list at the bottom becomes the date at the top.
- 3) **Next Due** - Makes the non-selected date the current date, and makes the selected dates higher such that the date succeeds the current date.
- 4) **+ Quantity** - Adds whatever date quantities you have entered to the selected date.
- 5) **- Quantity** - Subtracts whatever date quantities you have entered to the selected date.
- 6) **+ Weekday** - Adds whatever Weekday "WD" quantity you have to the selected date.
- 7) **- Weekday** - Subtracts whatever Weekday "WD" quantity you have from the selected date.
- 8) **Cancel** - closes the list and does nothing.

Past or Future Dates

Using the (+ or -) Quantity from the Select List Box at the top you can calculate a past or future date using either date at the top as the Start Date and the Quantities fields as the amount of time to go forward or backward.

Quantities Fields

There are 5 date quantities:

- 1) Y - Years
- 2) M - Months
- 3) W - Weeks
- 4) D - Days
- 5) WD - Weekdays (or Workdays)

The quantities fields are both Input/Output. What this means is that as you perform date calculations the calculations are Outputted to the Quantities fields. The Checkboxes turn the fields On/Off. After you perform a calculation you can play with the Checkboxes achieve any combination of display you want. Used in conjunction with the (+ or -) Quantity from the Select List Box at the top and the Quantities are used for Input for the Past or Future date calculation.

The WD or Weekday field is the **ONLY** quantity that is strictly an INPUT field. Calculations for Past or Future date will read from the WD field but no calculations are outputted to the WD field.

WD Button

This button brings up a window that shows a breakdown of the TotalDays - how many are Sundays, Mondays, etc.

Clear Button

This button clears the Quantities Fields. Selecting one of the Checkboxes will bring the previous amounts back.

Intro Button

Returns you back to the Introduction Screen.

Type Listbox

Use the dropdown listbox, in the upper right corner above the list, to switch between your DateBookUtil database and your DateBook database.

List Items

These are your DateBookUtil database records and the list will show all of these events. Use the "Get List Item" from the Select Listbox at the top to use these dates in your calculations. You create custom events using the "...Edit List" selection which will take you to the Edit Screen.

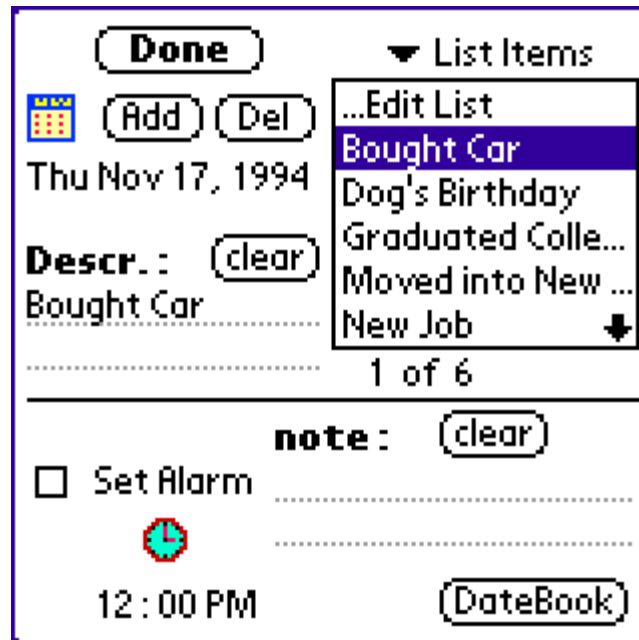
DateBook

These are your Palm's built-in DateBook database records and the list will show all of these events. Use the "Get List Item" from the Select Listbox at the top to use these dates in your calculations. You create custom events using the "...Edit List" selection which will take you to the Edit Screen.

List

Will display up to 6 records at a time. Displays either your DateBookUtil database or your Palm's built-in database records. You select with the Type Listbox above the list.

Chapter 5 – Edit List Screen



Description

The Edit List Screen allows you to edit your lists by adding or deleting entries. It also allows you to edit your DateBook entries. This also includes setting or clearing alarms in your DateBook.

Done Button

Returns you back to the Calculation Screen.

Type Listbox

Use the dropdown listbox, in the upper right corner above the list, to switch between your DateBookUtil database and your DateBook database.

List Items

These are your DateBookUtil database records and the list will show all of these events. The only information that these records store is just a Description of the event and the Date of the event. The bottom half of the screen is ignored. Press the Add or Del Buttons to create new records or delete existing ones.

DateBook

These are your Palm's built-in DateBook database records and the list will show all of these events.

List

Will display up to 6 records at a time. Displays either your DateBookUtil database or your Palm's built-in database records. You select with the Type Listbox above the list.

Directly below the list is an index counter that tells you which record # out of total number of records you are viewing.

Add Button

Creates new records in whichever database is currently selected: DateBookUtil or DateBook.

If "List Items" is selected then you are adding records to your DateBookUtil database. Only the Date and the Description are read as inputs when the event is recorded.

If "DateBook" is selected then you are adding records to your Palm's built-in DateBook. The Add Button and the DateBook Button in the lower right corner are the same button when "DateBook" is selected. The entire screen: Date, Description, Note, Alarm, and Time are all read as inputs. Duplicate records are possible if the button is repeatedly pressed.

Del Button

Deletes the currently selected record in the list, whether it be from your DateBookUtil database or your DateBook database. A delete confirmation box will pop-up to verify your choice.

Date

In the Upper left corner is a Date display with a Calendar icon above it and to the left. To change the date, simply tap the Calendar icon. The date is the date of the currently selected event in the list.

Calendar Icon

Allows you to choose a custom date for a new event you want to add to the database.

Descr. Field

A text field that can display up to 80 characters but will only record the first 30 characters. This is the Description Field which describes the event.

Clear Button

There are two Clear Buttons: 1 next to the Descr. Field and the other next to the Note Field; each will clear their corresponding Text Fields.

Note Field

Displays the first 80 characters and reads only the first 30 characters when recording. This field only pertains to DateBook records. Used only when reading or recording DateBook entries.

Alarm Checkbox

Sets the Alarm On/Off. If you select ON then make sure you set the correct time.

Clock Icon

Brings up a Select Time box for the user to set the alarm time. If you are running PalmOS 3.0 then the Time Box will have a Start-Time and an End-Time; only the Start-Time is read. All other PalmOS versions higher than 3.0 will only have a single time in the Select Time box.

DateBook Button

Reads all the inputs: Date, Description, Note, Alarm, and Time, and creates a new entry in your Palm's built-in DateBook regardless of which List you have showing. When the DateBook List is showing then the DateBook Button and the Add Button are the same.