



Handbook for the Palm™ Bluetooth Card

Copyright

Copyright © 2002 Palm, Inc. All rights reserved. HotSync, MultiMail, and Palm OS are registered trademarks of Palm, Inc. The HotSync logo, Palm, and the Palm logo are trademarks of Palm, Inc. Other product and brand names may be trademarks or registered trademarks of their respective owners.

Disclaimer and Limitation of Liability

Palm, Inc. assumes no responsibility for any damage or loss resulting from the use of this handbook.

Palm, Inc. assumes no responsibility for any loss or claims by third parties which may arise through the use of this software. Palm, Inc. assumes no responsibility for any damage or loss caused by deletion of data as a result of malfunction, dead battery, or repairs. Be sure to make backup copies of all important data on other media to protect against data loss.

IMPORTANT Please read the End User Software License Agreement with this product before using the accompanying software program(s). Using any part of the software indicates that you accept the terms of the End User Software License Agreement.

Contents

Chapter 1: Palm™ Bluetooth Card Overview	1
What can you do with the card?	1
Bluetooth technology	2
Wireless connectivity	2
The Internet bridge	2
Connecting at close range	3
Operational considerations	3
Chapter 2: Preparing Your Handheld to Use the Palm™ Bluetooth Card	5
Installing the software	5
Applications installed	7
Installing applications not included on the CD-ROM	8
Using the card	8
Card usage tips	10
Chapter 3: Connecting with Other Devices	11
Discovery	11
Device types	11
Methods of performing discovery/connection	12
Connecting using the Bluetooth application	12
Switching between a phone connection and a wireless LAN access point connection	22
Chapter 4: Using Your Palm™ Bluetooth Card Features	23
Telephony features	23
Tap dialing	24
Collaborative applications	26
Using BlueBoard	26
Using BlueChat	32
The Send function	38
Wireless LAN access point features	39

Chapter 5: Advanced User Functions	41
Using the Bluetooth Preferences screen	41
Enabling/disabling the user cache	45
Using the Connection Preferences screen	45
Using the Network Preferences screen	52
Customizing ISP settings	52
Customizing Palm WAP Browser settings	54
Connecting to non-GSM phones	54
Connecting to a GPRS network	56
Phone drivers	59
Switching connections to the same type of device	60
HotSync operation with your computer	61
Chapter 6: Performance Issues	65
Latency	65
Usage environments	65
Power management	66
Chapter 7: Connection Security	67
Passkeys	67
Trusted pairs	67
Chapter 8: Frequently Asked Questions	69
Installation/operation problems	69
Phone connection problems	69
Glossary	71
Product Regulatory and Safety Information	73
Index	77

Palm™ Bluetooth Card Overview

The Palm™ Bluetooth Card allows you to wirelessly connect your Palm™ handheld to devices enabled with Bluetooth technology, including other Palm handhelds, mobile phones, local area network (LAN) access points, and computers. With the Palm Bluetooth Card, you can do the following:

- Access data quickly without wires
- Connect to other computing and communicating devices equipped with Bluetooth technology

What can you do with the card?

You can use the Bluetooth Card to do the following:

- Access the Internet
- Check and send e-mail
- Chat with other users
- Collaborate on whiteboard drawings
- Exchange SMS (Short Messaging Service) messages
- Send data to other users
- Dial telephone numbers from your Address Book
- Print from Address Book or Datebook
- Perform wireless HotSync® operations

Additional equipment (for example, a mobile phone or laptop computer) enabled with Bluetooth technology is required to complete these tasks. This *Handbook* explains in detail how to perform each task.

Bluetooth technology

Bluetooth technology is the enabling technology of the Palm Bluetooth Card. Bluetooth technology provides flexible, inexpensive, easy-to-use wireless connectivity between devices. This technology offers several key benefits to the user, including the following:

- Wireless connectivity
- A bridge to the Internet
- Connectivity at close range

Wireless connectivity

The Bluetooth wireless technology was originally developed to solve the cable clutter problems consumers faced when connecting multiple devices. For example, by using Bluetooth technology, a Palm handheld can now interface with a mobile phone equipped with Bluetooth technology without requiring physical cable connections or IR (infrared) line-of-sight connections.

The types of connections for which cable clutter can be eliminated with Bluetooth technology include the following:

- Palm handheld to mobile phone
- Palm handheld to wireless LAN access point
- Palm handheld to laptop computer
- Palm handheld to printer

The Internet bridge

There are two ways that Bluetooth technology enables you to build a wireless bridge to established networks like the Internet or campus/corporate intranets:

Dial-up networking

This form of the Internet bridge is no different from the method many people use to access the Internet today. It entails dialing into the Internet through a modem and an ISP (Internet Service Provider). In this case, the user's mobile phone serves as the modem. Bluetooth technology eliminates the need for a physical cable connection in this scenario.

NOTE In order to connect to the Internet using a mobile phone, you must have both a wireless operator that supports data services and an ISP account.

Direct access networking

Direct access to a network via Bluetooth technology is possible using wireless LAN access points equipped with Bluetooth technology. A wireless LAN access point allows devices to connect to it wirelessly; the access point in turn connects to the Internet or an intranet. These access points may be installed in meeting rooms, classrooms, and public spaces, enabling multiple wireless access opportunities.

You can also directly access a GPRS network via Bluetooth technology using the high-speed data transfer option on your mobile phone.

Connecting at close range

To be truly wireless is a matter of connecting not only to the other side of the globe, but also to the other side of the room. Bluetooth technology enables you to wirelessly connect devices at a distance of up to 10 meters (30 feet), providing data access between a Palm handheld and another nearby device equipped with Bluetooth technology.

What's more, one Palm handheld equipped with Bluetooth technology can connect with up to seven other similarly equipped Palm handhelds, forming a small network known as a piconet and enabling group collaboration and data exchange.

NOTE The number of devices with which you can connect may be limited by the application you are using to make the connection; for example, with the collaborative application BlueBoard included on the CD-ROM you can connect with up to three other handhelds.

Operational considerations

Key considerations when using the Bluetooth Card include the following:

- Power management
- Connection security

See [Chapter 6](#) for information on power management with the Bluetooth Card. See [Chapter 7](#) for information on connection security with the Bluetooth Card.

Preparing Your Handheld to Use the Palm™ Bluetooth Card

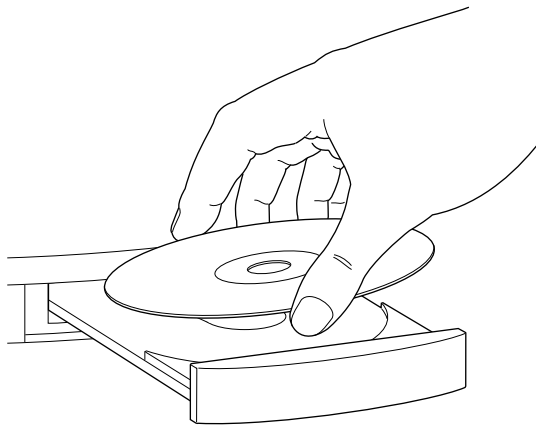
This chapter describes the steps you must complete in order to use the Palm™ Bluetooth Card with your handheld.

Installing the software

To use the Palm Bluetooth Card with your handheld, you must install the software files located on the CD-ROM.

To install the software (Windows):


1. Insert the CD-ROM into your computer's CD-ROM drive. A screen displays automatically.

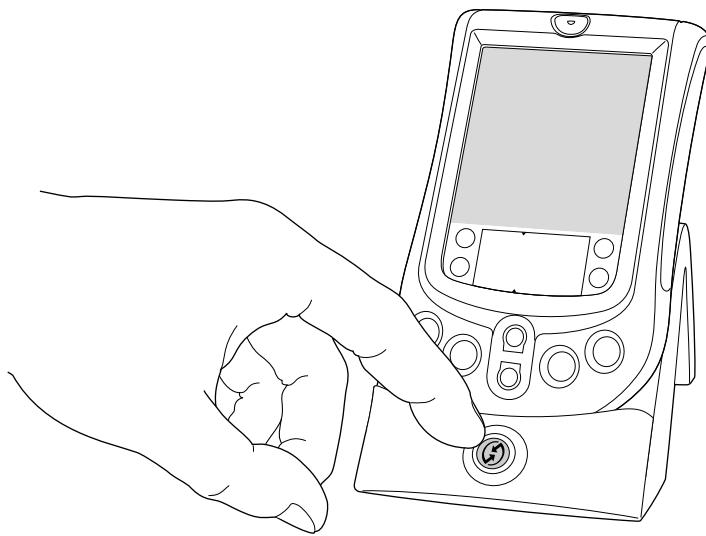


2. If you have the multilingual version of the Bluetooth Card, select the language you want to install. This must match the language of your handheld.
3. Select Bluetooth and Phone Services and follow the onscreen instructions. This installs the following components:
 - Bluetooth extensions for Palm OS® software
 - Bluetooth application
 - Telephony services
 - SMS (Short Messaging Services)

- Collaborative applications
- Related documentation

See “[Applications installed](#)” later in this chapter for information on these components.

4. (Optional) Select Web Clipping and/or Palm™ WAP Browser and follow the onscreen instructions to install these applications. See “[Telephony features](#)” in [Chapter 4](#) for information on these applications.
5. Connect your handheld to the cradle/cable, and press the HotSync® button ™.




NOTE You must perform a HotSync operation after installing the CD-ROM to install necessary drivers and collaborative applications to your handheld.

To install the software (Mac):

1. Insert the CD-ROM into the computer's CD-ROM drive. The folder containing the CD-ROM software will automatically open.
2. If you have the multilingual version of the Bluetooth Card, double-click the folder of the language you want to install. This must match the language of your handheld.
3. Double-click the Bluetooth Installer icon and follow the onscreen instructions. This installs the following components:
 - Bluetooth extensions for Palm OS software
 - Bluetooth application
 - Telephony services
 - SMS (Short Messaging Services)
 - Collaborative applications

See [“Applications installed”](#) later in this chapter for information on these components.

4. (Optional) Double-click the Web Clipping Installer and/or the WAP icon, and follow the onscreen instructions to install these applications. The WAP icon installs the Palm WAP Browser. See [“Telephony features”](#) in [Chapter 4](#) for information on these applications.
5. Connect your handheld to the cradle/cable, and press the HotSync button .

Applications installed

Installation of the Bluetooth software includes the following items:

Bluetooth extensions	Palm OS software extensions enabling wireless connectivity using Bluetooth technology from your handheld
Bluetooth application	Application that provides a step-by-step interface for connecting to a phone, laptop computer, or wireless LAN access point
Telephony services	Address Book tap dialing and the Phone Preferences screen
SMS	Application that allows Palm handheld users to exchange simple text messages with other users who have access to SMS service
BlueBoard (collaborative application)	Whiteboard application that allows Palm handheld users with the Bluetooth Card to collaborate on drawings
BlueChat (collaborative application)	Messaging application that allows Palm handheld users with the Bluetooth Card to exchange text in real time

See [Chapter 3](#) for information on connecting using the Bluetooth application. See [Chapter 4](#) for information on Address Book tap dialing, SMS, BlueBoard, and BlueChat. See [Chapter 5](#) for information on using the phone Connection screen.

Installing applications not included on the CD-ROM

You can use the following applications not included on the CD-ROM with the Bluetooth Card:

- MultiMail® SE e-mail application. Using MultiMail SE with the Bluetooth Card enables wireless sending and receiving of e-mail messages from your handheld.
- Web clipping application files. Using these files with the Bluetooth Card and the Web clipping application included on the CD-ROM enables wireless retrieval of data from the Internet for viewing on your handheld. See [Chapter 4](#) for more information on the Web clipping application.

To install applications not included on the CD-ROM:

- If the application is included on your handheld, refer to the CD-ROM included with your handheld for installation instructions.
- If the application is not included on your handheld, go to www.palm.com for installation instructions.

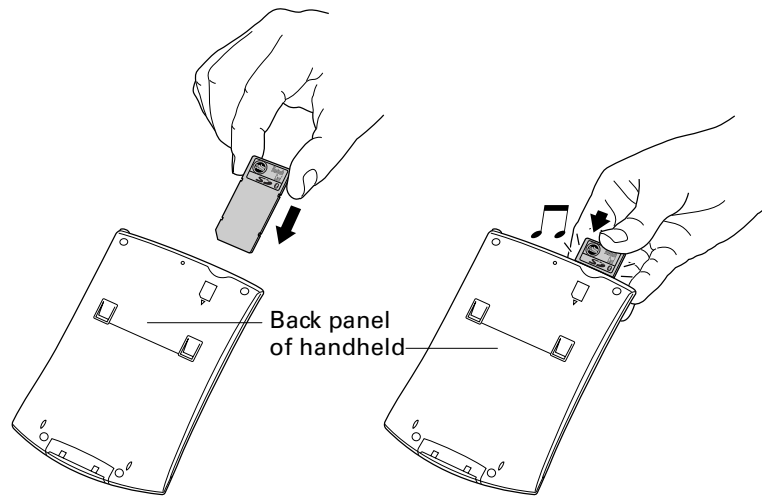
Using the card

After you have installed the software files onto your handheld, you can begin using the Bluetooth Card.

IMPORTANT You must install the software files from the CD-ROM before inserting the Palm Bluetooth Card in the handheld. Otherwise, the card will not function properly.

To insert the card:

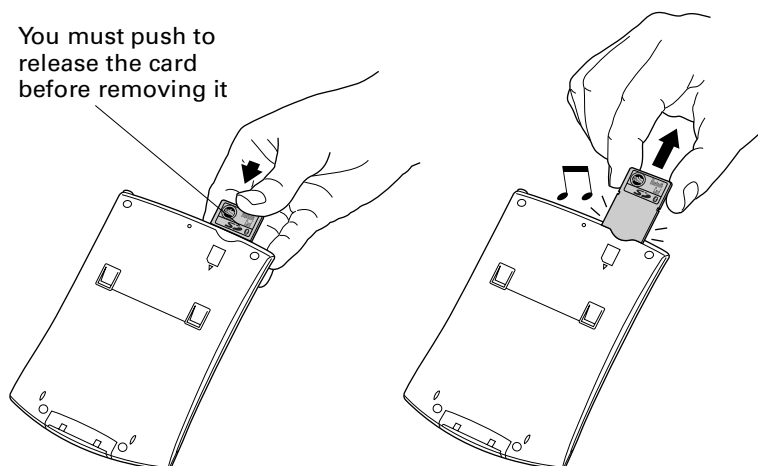
1. Insert the card in the direction shown by the icon on the back panel of your handheld. The gold contact pins should face the front of the handheld.
2. Push the card in with your thumb. When you feel the card lock, the card is properly seated. If you have system sound turned on, you will hear the system sound.



IMPORTANT The Bluetooth Card extends slightly. Do not attempt to force the card in further.

To remove the card:

1. Push lightly against the card with your thumb.
2. When the card releases, you can remove it. If you have system sound turned on, you will hear the system sound.



Card usage tips

The following tips will help you get optimal use of your Bluetooth Card:

- Insert the card into your handheld at the beginning of a Bluetooth session. Remove the card when the session is complete.
- When not in use, store the card in a dry, dust-free location.

See “[Product Regulatory and Safety Information](#)” for detailed information on using your Bluetooth Card safely.

Connecting with Other Devices

This chapter describes the steps needed to connect your handheld with other devices equipped with Bluetooth technology.

Discovery

Discovery is the process of finding other devices equipped with Bluetooth technology within range of your handheld. The discovery process includes the following:

- Sending a request to discover devices equipped with Bluetooth technology within range
- Selecting devices with which you wish your handheld to connect

The discovery process is typically initiated by an application included with the Bluetooth Card. For example, when you connect your handheld with a mobile phone using the Bluetooth application, the application gives you the option of discovering phones equipped with Bluetooth technology within range in order to make a connection with one of these phones.

Many applications enable you to create a trusted pair with a device. Once you create a trusted pair with a device, you can connect with it directly without going through the discovery process. Information on creating trusted pairs is found in the procedures described later in this chapter.

NOTE Bluetooth technology must be set to “on” in order for the discovery process to work. By default, Bluetooth technology is on. See [“Connecting using the Bluetooth application”](#) later in this chapter for how to turn Bluetooth technology off and on.

Device types

The following types of devices can be discovered and connected with from your handheld:

- Mobile phone
- Laptop computer
- Printer

- Wireless LAN access point
- Other Palm™ handhelds

NOTE Only devices equipped with Bluetooth technology and within range can be discovered by and connected with your handheld. See “Usage environments” in [Chapter 6](#) for range limits of the card. For a list of specific device makes and models supported by the Bluetooth Card, go to www.palm.com/bluetooth.

Methods of performing discovery/connection

Discovery/connection is a function of several applications included with the Bluetooth Card. You also have the option of connecting via Bluetooth technology using the Send function included with various applications on your handheld, as well as through your handheld’s Connection Preferences screen. Depending on whether you are connecting using an application, the Send function, or the Connection Preferences screen, only certain types of devices can be discovered, as follows:

- **Using the Bluetooth application:** Connect to mobile phone, laptop computer, wireless LAN access point
- **Using a collaborative application delivered with the Bluetooth Card:** Connect to Palm handheld
- **Using the Send function:** Connect to Palm handheld, printer, laptop computer
- **Using the Connection Preferences screen:** Connect to mobile phone, laptop computer, wireless LAN access point

Connecting using the Bluetooth application is described later in this chapter. See [Chapter 4](#) for information on connecting through collaborative applications or by using the Send function. See “Using the Connection Preferences screen” in [Chapter 5](#) for information on connecting using your handheld’s Connection Preferences screen.

Connecting using the Bluetooth application

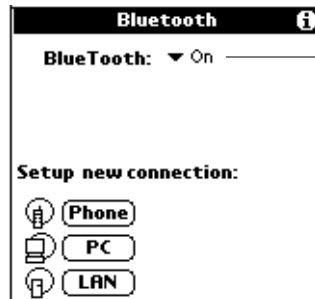
The Bluetooth application provides a step-by-step process to assist you in discovery/connection with another device.

To connect with another device using the Bluetooth application:

1. Tap the Applications icon .
2. Tap the Bluetooth icon .

One of the following screens appears:

- If this is the first time you are using the application or no connection has been made through the Bluetooth application on your handheld, the following screen appears:



Use the toggle option to turn Bluetooth technology off and on

Tap the icon or name of the type of device with which you wish to connect to begin the connection process.

- If you have previously made a connection through the Bluetooth application on your handheld, the following screen appears:



The Connected to field shows the ISP or network with which you have most recently made a connection. Tap the Connected to field to change the connection, or tap the icon or name of the type of device with which you wish to connect to begin a new connection process. If you tap the Connected to field to change the connection, the same screen appears with the new connection name in the Connected to field.

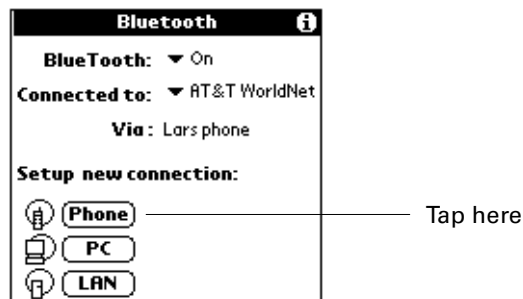
If the most recent device with which you have made a connection is a laptop computer, the Via field does not appear.

Use the instructions below for connecting with a phone, a laptop computer, and a wireless LAN access point using the Bluetooth application.

NOTE You can only connect with GSM phones using the Bluetooth application. To connect with a non-GSM phone, see ["Connecting to non-GSM phones"](#) in [Chapter 5](#).

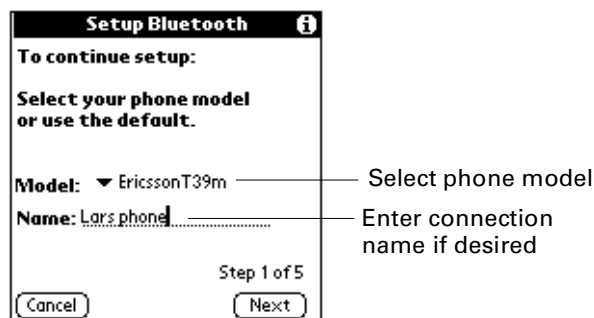
To set up a connection with a phone:

1. On the Bluetooth application screen, tap Phone.



2. Select the model of phone with which you wish to create a connection. If your phone model does not appear on the list, you can choose the default driver (Standard GSM Driver), or download the specific driver for your phone. See [“Phone drivers”](#) in [Chapter 5](#) for more information.

(Optional) Enter a name for this connection, and then tap Next. This name identifies the connection between your handheld and a particular phone, and can be anything you choose. You should not enter the name of your ISP here.

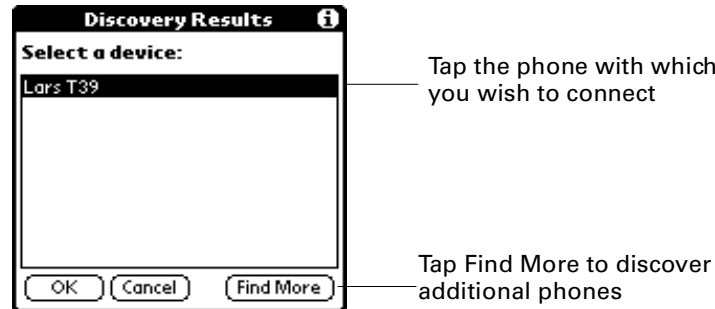


3. Set your phone to be able to be discovered by another device (discoverable), and then tap Next.



NOTE See the documentation that was included with your phone for how to set your phone to discoverable.

4. The discovery process now takes place, during which one or more discovery screens appear. When the Discovery Results screen appears, do one of the following:
 - If the phone with which you wish to connect appears on the discovery results list, select the phone name, and then tap OK.
 - If the phone with which you wish to connect does not appear on the discovery results list, tap Find More, select the phone name when it appears on the list, and then tap OK.



NOTE If your handheld does not find any phones enabled with Bluetooth technology within range, you will receive a status message. You can try discovery again, or tap OK to return to the Bluetooth screen. You may need to perform the discovery process several times.

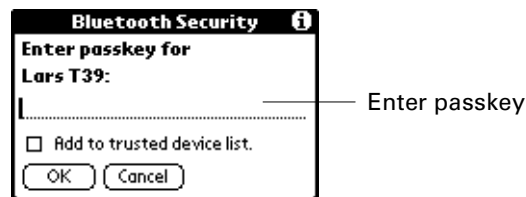
5. Prepare your phone to accept a Bluetooth connection, and then tap Next.



NOTE See the documentation that was included with your phone for how to prepare your phone to accept a Bluetooth connection. The documentation might refer to a Bluetooth connection as a Bluetooth pairing or a Bluetooth link.

6. The first time you connect with a phone, you will be asked to create a trusted pair with that phone. To create a trusted pair with a phone, tap Next, enter the

passkey when prompted, and then tap OK. Select the check box to add the phone to your Trusted Pair list.



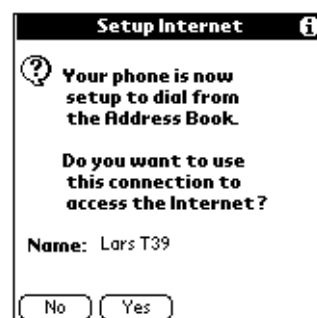
NOTE See “Trusted pairs” in [Chapter 7](#) for more information on trusted pairs.

Depending on the model of phone with which you are connecting, you may be able to choose the passkey to enter, or the phone may have a passkey preassigned; see the documentation included with your phone for information. The documentation might refer to a Bluetooth connection as a Bluetooth pair or a Bluetooth link.

In either case, you must use the same passkey for both the phone and your handheld. If the passkeys are different, you will receive an error message, a trusted pair will not be formed, and the connection with the phone will fail. You will need to start over at step 1.

If passkey authentication succeeds (that is, passkey exchange is successful) but the Bluetooth application is unable to complete the connection with the phone for any other reason, you will receive an error message and be given the option to try connecting again.

7. If passkey authentication succeeds and the Bluetooth application successfully connects with your phone, the following screen appears. You are now able to use SMS and wireless tap dialing.



You have the option of using the phone connection to access the Internet. Do one of the following:

- To use the phone connection to access the Internet, tap Yes and follow the steps below.
- To use the phone connection for SMS and tap dialing only, tap No. A confirmation screen appears. See the electronic *SMS Handbook* included on

the CD-ROM for information on using SMS. See [“Tap dialing”](#) in [Chapter 4](#) for information on using tap dialing.

To use a phone connection to access the Internet:

1. Create a connection with a phone as described in the above procedure.
2. After you tap Yes in step 7 above, the following screen appears:



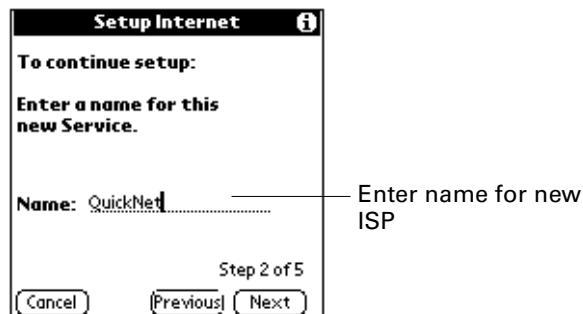
You can choose to use an existing ISP, or set up service with a new ISP.

To use an existing ISP:

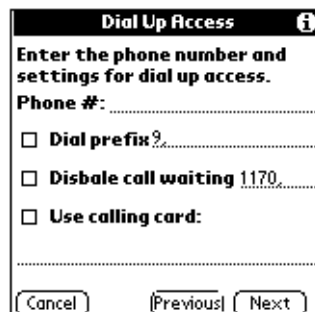
- On the screen shown in step 2 above, select the ISP, and then tap Next. A confirmation screen appears.

To set up service with a new ISP:

1. On the screen shown in step 2 of using a phone connection to access the Internet, tap Setup New ISP, enter the ISP name, and then tap Next.



2. Enter the phone number and settings for dial-up access, and then tap Next.



3. Enter your login name, tap the Password box to enter password, enter your password, and then tap OK. The login name and password must be those you use to connect through your ISP.

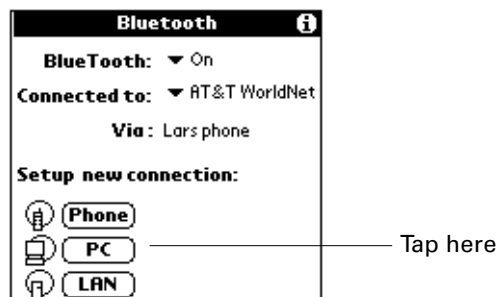


On this screen, you can also tap Advanced Network Settings to change the default network settings. See [“Customizing ISP settings”](#) in [Chapter 5](#) for more information.

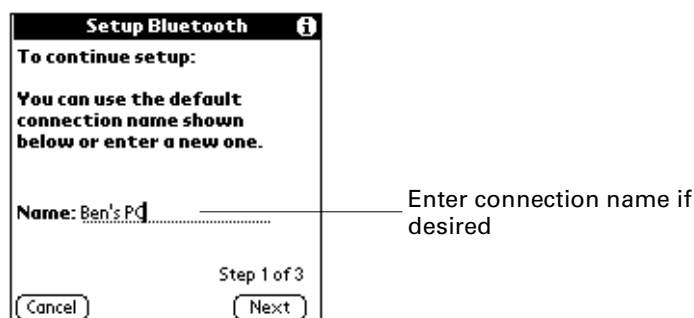
4. Tap Next. A confirmation screen appears.

To create a connection with a laptop computer:

1. On the Bluetooth application screen, tap PC.



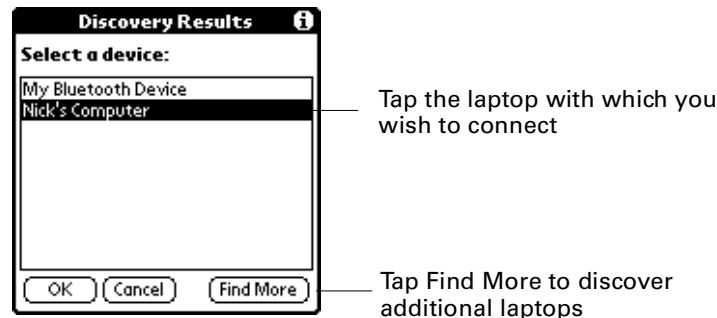
2. (Optional) Enter a name for this connection, and then tap Next. This name identifies the connection between your handheld and a particular laptop computer, and can be anything you choose.



3. You may need to enter a login name and password. Be sure to have the login name and password provided by your network administration, and then tap Next.



4. Do one of the following:
 - If the computer with which you wish to connect with appears on the discovery results list, select the computer name, and then tap OK.
 - If the computer with which you wish to connect does not appear on the discovery results list, tap Find More, select the computer name when it appears on the list, and then tap OK.



NOTE If your handheld does not find any computers enabled with Bluetooth technology within range, you will receive an error message. You can try discovery again, or tap OK to return to the Bluetooth screen. You may need to perform the discovery process several times.

5. (Optional) The laptop computer with which you are trying to connect may ask you for a passkey. If this occurs, enter the passkey when prompted, and tap OK.

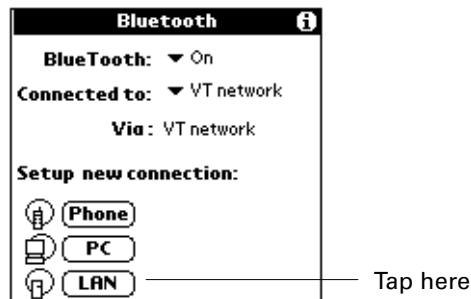
Depending on the model of laptop with which you are connecting, you may be able to choose the passkey to enter, or the laptop may have a passkey preassigned. See the documentation included with your laptop for information. In either case, you must use the same passkey for both the laptop and your handheld.

6. If the Bluetooth application is unable to complete the connection with the laptop computer, you will receive an error message and be given the option to try connecting again.

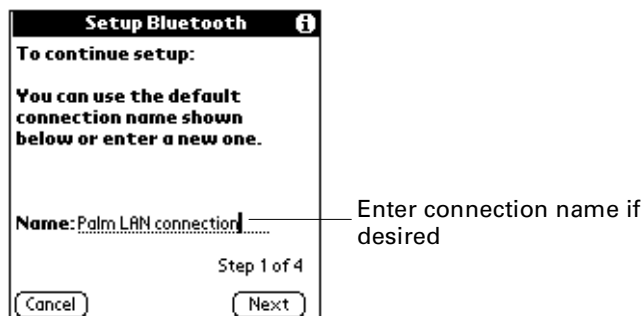
If the Bluetooth application successfully connects with the laptop computer, a confirmation screen appears.

To create a connection with a wireless LAN access point:

1. On the Bluetooth application screen, tap LAN.



2. (Optional) Enter a name for this connection, and then tap Next. This name identifies the connection between your handheld and a particular wireless LAN access point, and can be anything you choose.

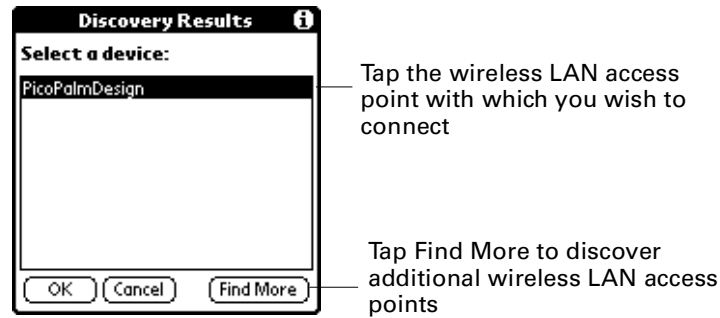


3. Be sure to have the login name and password provided by your network administrator, and then tap Next.



4. Do one of the following:

- If the LAN access point with which you wish to connect appears on the discovery results list, select the LAN access point name, and then tap OK.
- If the LAN access point with which you wish to connect does not appear on the discovery results list, tap Find More, select the LAN access point name when it appears on the list, and then tap OK.



NOTE If your handheld does not find any LAN access points enabled with Bluetooth technology within range, you will receive a status message. You can try discovery again, or tap OK to return to the Bluetooth screen. You may need to perform the discovery process several times.

5. (Optional) The LAN access point with which you are trying to connect may ask you for a passkey. If this occurs, enter the passkey supplied by your network administrator.
6. Enter your login name, tap the Password box to enter password, enter your password, tap OK, and then tap Next.



After you enter a password, the Password field entry changes to “Assigned.” If you tap Next without entering a login name, you will receive an error message.



7. Tap Next. If the Bluetooth application is unable to complete the connection with the LAN access point, you will receive an error message and be given the option to try connecting again.

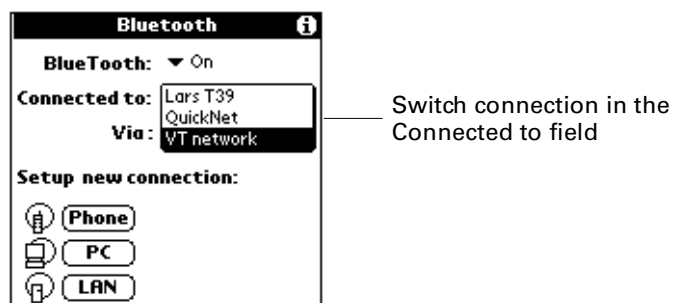
If the Bluetooth application successfully connects with the LAN access point, a confirmation screen appears.

Switching between a phone connection and a wireless LAN access point connection

In addition to performing discovery/connection, the Bluetooth application also lets you easily switch between a phone connection and a LAN access point connection.

To switch between a phone connection and a LAN access point connection:

1. Tap the Applications icon .
2. Tap the Bluetooth icon .
3. Tap the Connecting to field, and select the connection to which you wish to switch.



When the connection has been switched, the following message appears:



4. Tap OK.

You can also switch between connections to the same type of device; for example, between a connection to one phone and a connection to a different phone.

See [“Switching connections to the same type of device”](#) in [Chapter 5](#) for information.

Using Your Palm™ Bluetooth Card Features

This chapter describes the key features you can use with the Palm™ Bluetooth Card. These features fall into the following broad categories:

- Telephony
- Collaboration
- Sending data via Bluetooth technology
- Wireless LAN access point

Telephony features

The Bluetooth Card serves as your phone companion. Telephony features include the following:

Address book tap dialing	Tap the number of an Address Book entry in your handheld to dial a voice call number on your mobile phone
SMS	Send, receive, and store simple text messages with users who have access to SMS services.
	NOTE See the <i>SMS Handbook</i> included on the CD-ROM for detailed information on SMS.
E-mail	If your Palm™ handheld came with an e-mail client installed, or you installed the e-mail client that was included on the CD-ROM that came with your handheld, you can send and receive e-mail messages using your mobile phone as a wireless modem.
Palm™ WAP Browser	View specially formatted WAP pages on the Internet through this browser, using your mobile phone as a wireless modem.
	NOTE See the electronic documentation on the Palm WAP Browser included on the CD-ROM for detailed information on the Palm WAP Browser.

Web clipping application

Retrieve specific information from the Internet for viewing on your handheld, using your mobile phone as a wireless modem.

NOTE See the Guide to Web Clipping Applications on the CD-ROM included with your handheld for information on web clipping applications.



NOTE Only connections with GSM phones support Address Book tap dialing and SMS using Bluetooth technology. If you wish to connect with a non-GSM phone to access any of the Internet-based features using Bluetooth technology (e-mail, Palm WAP Browser, web clipping), see [“Connecting to non-GSM phones”](#) in [Chapter 5](#).

Tap dialing

Tap dialing from your handheld enables you to tap the number of an Address Book entry to dial a voice call number via your mobile phone. You then use your phone to carry out the call. Tap dialing involves two tasks:

- Enabling tap dialing
- Using tap dialing

To enable tap dialing:

1. Press the Address Book button .
2. Tap the Menu button , and then tap the Options menu.
3. Tap Preferences.
4. Tap Enable Tap-Dialing. If the box is already checked, tap dialing is enabled, and you don't need to do anything.



5. Tap OK.

To use tap dialing:

1. Press the Address Book button .

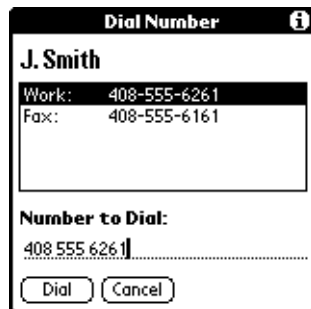
NOTE You must currently be connected with a phone or have previously created a trusted pair with a phone to use Tap Dialing. See [“Connecting using the Bluetooth application”](#) in [Chapter 3](#) for instructions on connecting with a phone.

2. Tap the phone number you wish to dial.



Tap the phone number portion of the Address Book entry to use tap dialing

3. Select the number you wish to dial, and then tap Dial.



The following dialing screen appears:



Collaborative applications



The Bluetooth Card includes two applications that enable you to collaborate with other users of Palm handhelds equipped with Bluetooth technology:

BlueBoard	Virtual whiteboard application that allows Palm handheld users utilizing Bluetooth technology to collaborate on drawings.
BlueChat	Messaging application that allows Palm handheld users with Bluetooth technology to exchange text in real time. BlueChat provides chat with local users whose Palm handhelds are within range. It does not provide Internet-based long-distance chat.

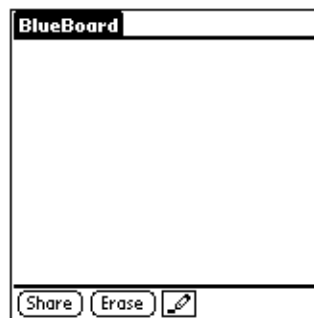
Using BlueBoard

To use the BlueBoard collaborative application, you can either first connect to other users, or start drawing and then connect to other users. The user who invites other users to collaborate is the host. Users who are invited and join a BlueBoard session are partners. A host can connect with up to three partners.

To launch BlueBoard:

1. Tap the Applications icon .
2. Tap the BlueBoard icon .

When BlueBoard launches, you see the following screen:



To connect with partners in BlueBoard:

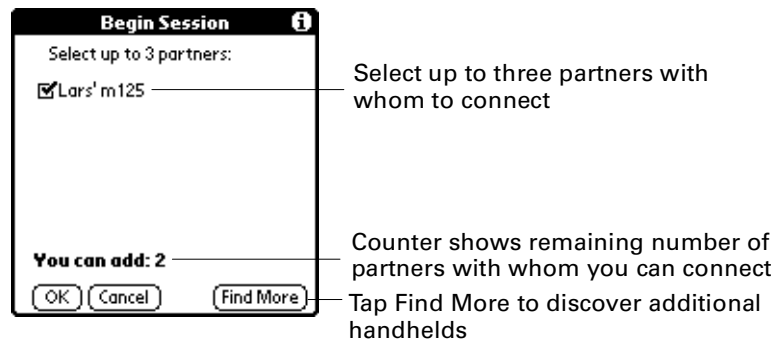
1. On the drawing area screen, tap Share.

If you are using BlueBoard for the first time, tapping Share causes BlueBoard to discover all Palm handhelds within range. The names of these handhelds appear on the Begin Session screen.

If you have previously collaborated using BlueBoard, tapping Share displays a list of recent partners from previous BlueBoard sessions on the Begin Session screen. See “[Recent contributors](#)” later in this chapter.



2. Select partner(s) with whom you wish to collaborate with by selecting the check box next to the device name(s) on the Share With Partners screen, and then tap OK.



NOTE Because a maximum of four people (host plus three partners) can share a drawing, the Share With Partners screen displays a decrementing counter showing the host how many more partners they can add to share the drawing. The host is prevented from selecting additional check boxes when the counter reaches zero.

3. To find more partners within range, tap Find More. This process discovers all Palm handhelds within range and refreshes the partner list according to the following parameters:

If a partner was selected on the original list but cannot be discovered after tapping Find More:

The partner is added to the refreshed list in bold, with the phrase "... Not Found" after the device name.



If a partner was not selected on the original list but is discovered after tapping Find More:

The partner is added to the refreshed list with the check box not selected.

If a partner was not selected on the original list and cannot be discovered after tapping Find More:

The partner does not appear on the refreshed list.

4. Tap OK. This starts a connection with all partners whom the host has selected from the list.
5. As the host connects with each handheld, the following dialog box appears on the host's handheld:



To abort the connection process with a given handheld, tap Cancel. This cancels all connections, and the host must start the connection process over again.

If the host selects a partner who does not have BlueBoard installed on his or her handheld, or a connection cannot be established, the following error message appears on the host's handheld:



6. As the host connects with each handheld, the following dialog box appears on the partner's handheld:



The partner does one of the following:

- Accepts the connection by tapping Yes.
- Declines the connection by tapping No.

If the partner taps No, the following dialog box appears on the host's handheld:



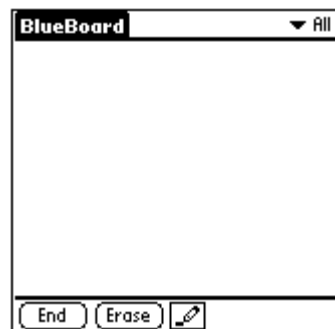
If the partner has blocked all requests for a BlueBoard connection, the following dialog box appears on the host's handheld:



See ["BlueBoard Options menu"](#) later in this chapter for information on blocking drawing requests.

7. Tap OK.

Once the connection process is complete, the following screen appears for all users.



Recent contributors

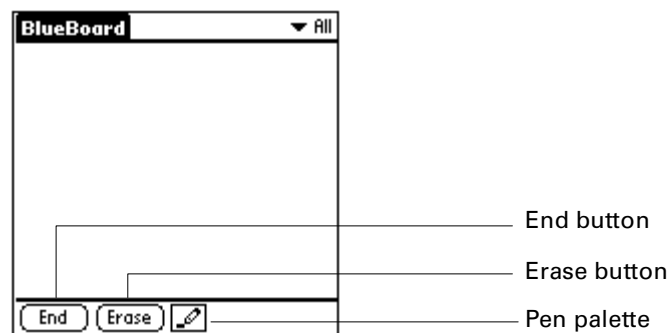
When a host adds a partner to a collaborative drawing, BlueBoard stores that partner's device name and address. BlueBoard can store up to ten name/address pairs.

Each time the host begins the connection process, BlueBoard indicates potential partners by displaying a list of stored device names in the Begin Session dialog box.

TIP To connect with partners other than those displayed from the stored device list, tap Find More. See the steps on connecting with partners in BlueBoard or BlueChat earlier in this chapter.

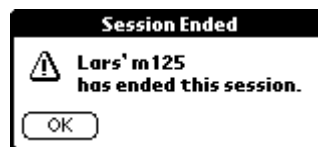
BlueBoard functionality

After you have connected with partners, you can use BlueBoard functions to collaborate on a whiteboard drawing.



End

- **Selected by host:** Disconnects connection to all partners. When a host taps End, the following dialog box appears to alert partners that the session has been ended:



- **Selected by partner:** Disconnects partner from connection. The partner's name is removed from the partner pick list. Other partners do not receive an alert when a partner taps End.

Erase

Erases the screen for all participants in the current drawing.

Pen palette

Allows the user to select from three different pen sizes: 1, 2, or 3 pixels wide (default is 2 pixels).

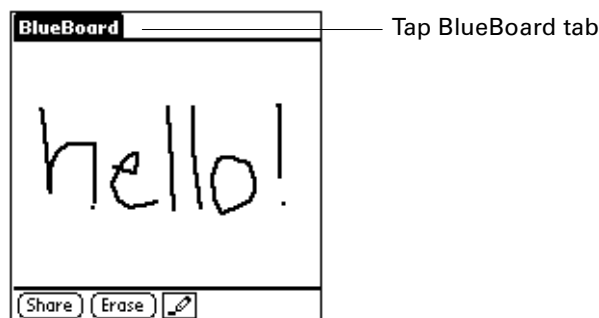
- Color palette** (Color handhelds only; not shown on sample screen above)
Allows the user to select a drawing color. A filled area around a color wedge (black, blue, green, red) shows the current color for the handheld. A user can only choose a color if no other user is using that color.
- Color legend** (Color handhelds only; not shown on sample screen above)
Displays the user's handheld name on the partner pick list in the default drawing color, according to the following scheme:
- Host: black
 - Partner 1: red
 - Partner 2: blue
 - Partner 3: green
- A host or collaborator can change his or her default color via the color palette if no other user is using that color.

BlueBoard Options menu

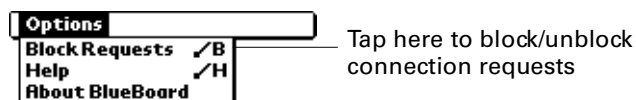
The BlueBoard Options menu allows users to block requests, access help tips, or view information about BlueBoard.

To block connection requests:

1. Tap the BlueBoard tab.



2. Tap Options, and then tap Block Requests.





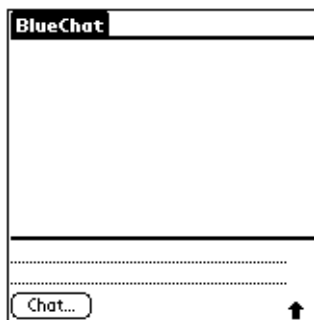
TIP To unblock requests, follow the above steps and select Allow Requests from the Options menu.

Using BlueChat

To use the BlueChat collaborative application, you first connect to another user. The user who invites another user to collaborate is the host. The user who is invited and join a BlueChat session is the partner.

To launch BlueChat:

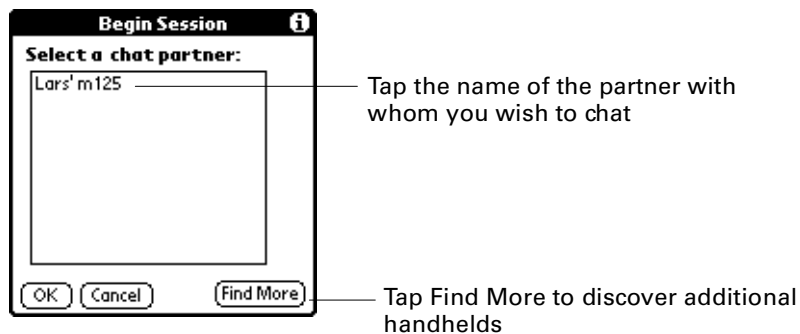
1. Tap the Applications icon .
2. Tap the BlueChat icon . The following screen appears:



To connect with a partner in BlueChat:

1. If you are using BlueChat for the first time, launching BlueChat causes the application to automatically discover all Palm handhelds within range. The names of these handhelds appear on the Connect screen.

If you have previously collaborated using BlueChat, tap Chat. This displays a list of recent partners from previous BlueChat sessions on the Connect screen. See [“Recent contributors”](#) later in this chapter.



2. Select the partner with whom you wish to chat by tapping on his or her name, and then tap OK.
3. If you do not see the partner with whom you wish to chat, tap Find More. This process discovers all Palm handhelds within range and refreshes the partner list.
4. Tap OK. This starts a connection with the partner whom the host has selected from the list.

5. As the host connects with the chosen handheld, the following dialog box appears on the host's handheld:

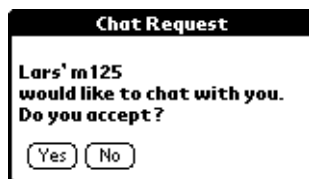


To abort the connection process with a given handheld, tap Cancel. This cancels all connections, and the host must start the connection process over again.

If the host selects a partner who does not have BlueChat installed on his or her handheld, or a connection cannot be established, the following error message appears on the host's handheld:



6. As the host connects with the partner's handheld, the following dialog box appears on the partner's handheld:



The partner does one of the following:

- Accepts the connection by tapping Yes.
- Declines the connection by tapping No.

If the partner taps No, the following dialog appears on the host's handheld:



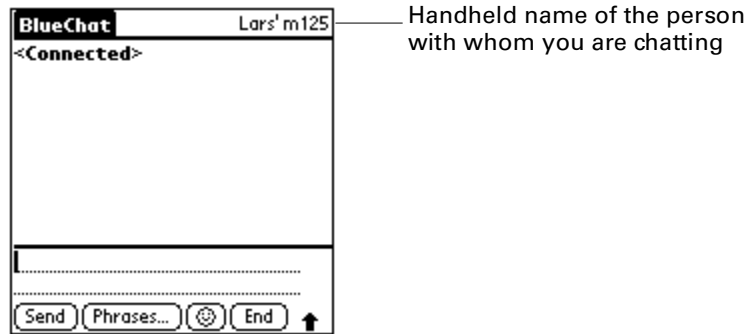
If the partner has blocked all requests for a BlueBoard connection, the following dialog appears on the host's handheld:



See “[BlueChat Options menu](#)” later in this chapter for information on blocking chat requests.

7. Tap OK.

Once the connection is established, the “<Connected>” indicator appears on both host and partner handhelds. The handheld name of the person with whom you are chatting appears in the upper-right corner of the screen:



Recent contributors

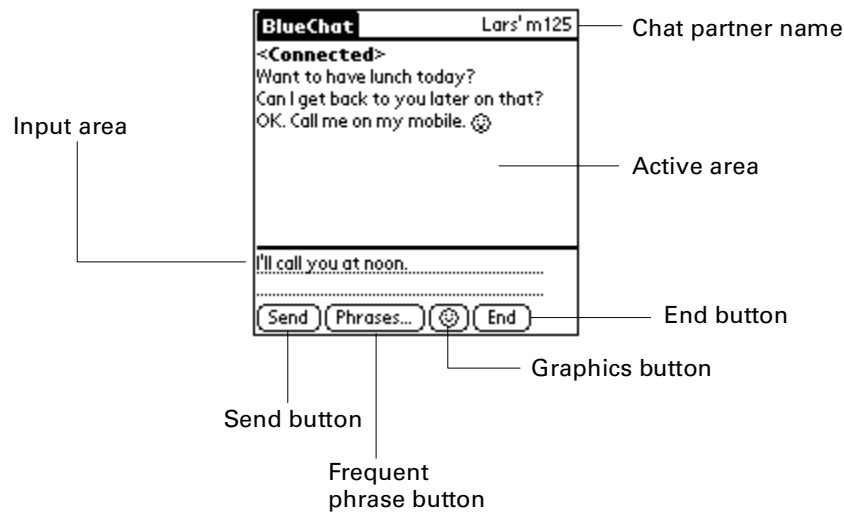
When a host adds a partner to a chat, BlueChat stores that partner’s device name and address. BlueChat can store up to ten name/address pairs.

Each time the host begins the connection process, BlueChat indicates potential partners by displaying a list of stored device names in the Chat Partners dialog box.

TIP To connect with partners other than those displayed from the stored device list, tap Find More. See steps on connecting with partners in BlueChat earlier in this chapter.

BlueChat functionality

After you have connected with a partner, you can use BlueChat functions to exchange text messages in real time.



Active area	<p>Displays text messages and graphics being sent between the host and the partner.</p> <p>Also displays the following system messages:</p> <ul style="list-style-type: none"> ■ <Connected>: Indicates that the chat session has begun. ■ <user name> disconnected: Indicates that a user has ended the chat session. ■ <Lost connection>: Indicates connection has been dropped due to interference, user moving out of range, or other problem.
Input area	Displays text messages and graphics being entered before they are sent to another user.
Send button	Takes the current text/graphic message in the input area and sends it to the other user. The message is then displayed in the active area of both handhelds.
Frequent phrase button	Stores frequently entered phrases; see the steps on using the frequent phrase button later in this chapter.
Graphics button	Enables the user to append graphics to text message; see the steps on using the Graphics button later in this chapter.
End button	Ends the connection between the host and the partner.
Chat partner name	Displays the chat partner's handheld name.

To use the frequent phrase button:

1. Tap Phrases.
2. Choose one of the following:
 - To add a phrase to the input area, tap the phrase, and then tap OK.
 - To add a new phrase to the list, tap New, enter the phrase, and then tap OK.
 - To delete a phrase, tap the phrase, tap Delete, and then tap OK.



BlueChat includes several built-in phrases, to which you can add your own. The phrase dialog box can store up to 40 phrases.

To use the Graphics button:

1. From the main BlueChat screen, tap the Graphics button ☺.
2. Tap any of the graphics to add it to your text message. Tapping any of the graphics immediately closes the dialog and adds the selected graphics to the text message. Graphics appear at the end of a text message only.

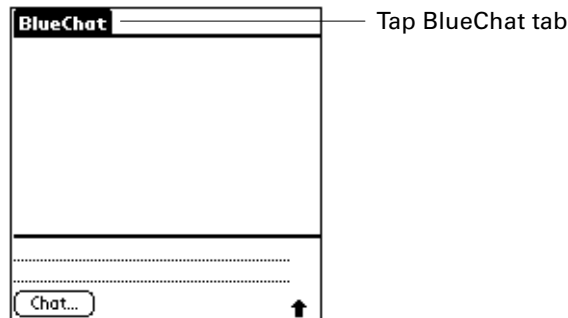
BlueChat Options menu

The Options menu in BlueChat allows users to do the following:

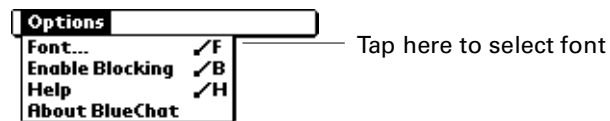
- Select a font
- Block requests for chat
- Access BlueChat help
- View information about BlueChat

To select a font:

1. Tap the BlueChat tab.



2. Tap Options, and then tap Font.

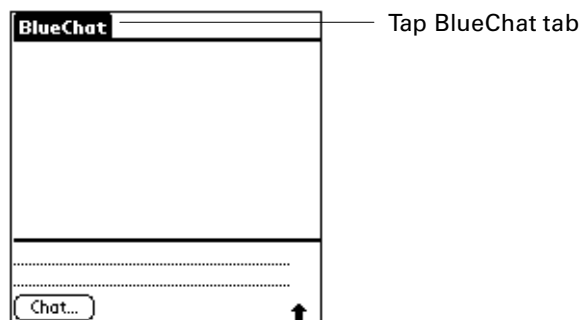


3. Tap the desired font, and then tap OK.

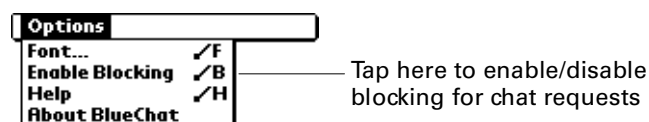


To block requests for chat:

1. Tap the BlueChat tab.



2. Tap Options, and then tap Enable Blocking.



3. Tap OK.

TIP To unblock requests, follow the above steps and select Disable Blocking from the Options menu.

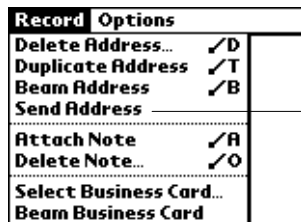
The Send function

The Bluetooth Card supports the Send function enabled by your handheld operating system. Using the Send function with the Bluetooth Card, you can share files such as the following with other Palm handhelds or printers enabled with Bluetooth technology:

- Electronic business cards
- Calendar events

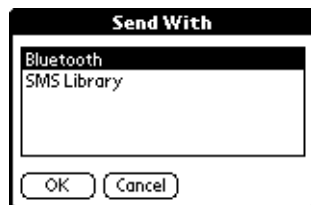
To use the Send function:

1. Open an application that supports the Send function, such as the Address Book.
2. Tap the Send function from the leftmost menu on the application screen. This function may have different names depending on the application you are using. For example, in Address Book the function is called Send Address or Send Category.



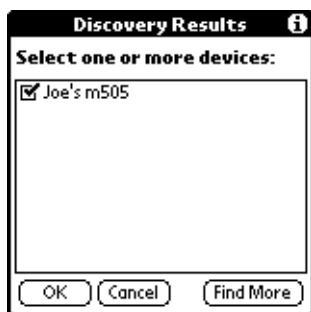
Look for menu option containing the word "Send"

3. Tap Bluetooth in the Send With field.



4. Tap OK. Bluetooth technology then goes through discovery to find other handhelds within range.

5. Select the handheld to which you wish to send information from the list of discovered devices, and tap OK. Bluetooth technology automatically sends the information.



NOTE See the electronic *Handbook* on the CD-ROM that came with your handheld for detailed information on the Send function.

Wireless LAN access point features

A wireless LAN access point enabled with Bluetooth technology provides an entry point into a local area network. You can log onto these networks from your handheld to access content services.

Wireless LAN access points can be located in a corporate setting or in public areas such as the following:

- Airport lounges
- Hotels
- Train stations
- Corporate campuses

By connecting your handheld to a wireless LAN access point enabled with Bluetooth technology, you can access the following features at speeds faster than through a phone connection, without incurring airtime charges on your mobile phone:

- Send and receive e-mail from the e-mail application included with your handheld.
- Access the Internet for using the Palm WAP Browser and retrieve information via web clipping applications. See the feature table under [“Telephony features”](#) earlier in this chapter.

To access a network from your handheld with the Bluetooth Card, you must set your network preferences. See [“Using the Connection Preferences screen”](#) in [Chapter 5](#).

Advanced User Functions

This chapter describes the advanced functions available with the Palm™ Bluetooth Card, including the following:



- Using the Bluetooth Preferences screen
- Using the Connection Preferences screen
- Using the Network Preferences screen
- Connecting to non-GSM phones
- Connecting to a GPRS network
- Switching connections to the same type of device
- Performing a HotSync® operation with your laptop computer

Using the Bluetooth Preferences screen

From the Bluetooth Preferences screen, you can do the following:

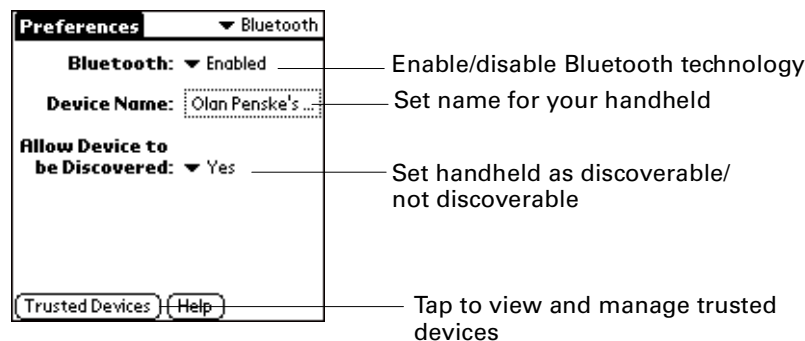
- Enable/disable Bluetooth technology
- Set the name that other users will see when a connection is made with your handheld
- Set whether the handheld is discoverable or not discoverable
- Perform the discovery/connection process
- View and manage trusted devices
- Enable/disable the user cache

To access the Bluetooth Preferences screen:

1. Tap the Applications icon .
2. Tap the Preferences icon .
3. Tap Bluetooth from the pick list in the upper-right corner of the screen.



You can set basic Bluetooth technology preferences for your handheld as follows:



Enable/disable Bluetooth technology

Select Enabled or Disabled from the Bluetooth technology toggle option.

Set handheld name that will be visible to other users

Tap the Device Name field, enter the device name, and then tap OK.



Set device as discoverable or not discoverable

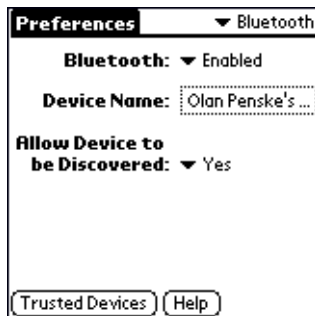
Select yes or no from the toggle option. If you set your handheld to be not discoverable, you will only be able to initiate the discovery/connection process with other devices using your Bluetooth Card; you will only be able to receive connections from devices with which you have previously formed a trusted pair.

View and manage trusted devices

See steps below.

To view and manage trusted devices:

1. Tap the Applications icon .
2. Tap the Preferences icon .
3. Tap Bluetooth from the pick list in the upper-right corner of the screen.
4. Tap Trusted Devices.



From this screen you can view details about/delete a trusted device, or add a trusted device.

To view details about/delete a trusted device:

1. On the Trusted Devices screen, select the device you wish to view/delete, and then tap Details.



2. Device details appear on the following screen. To delete the device, tap Delete Device.



3. Tap Done twice to return to the Bluetooth Preferences screen.

IMPORTANT If you add a trusted device and then replace your Bluetooth Card or use a card with a different serial number, you must delete the device from your trusted device list before you can connect with it using a new card. Otherwise, you will not be able to connect with the device using the new card.

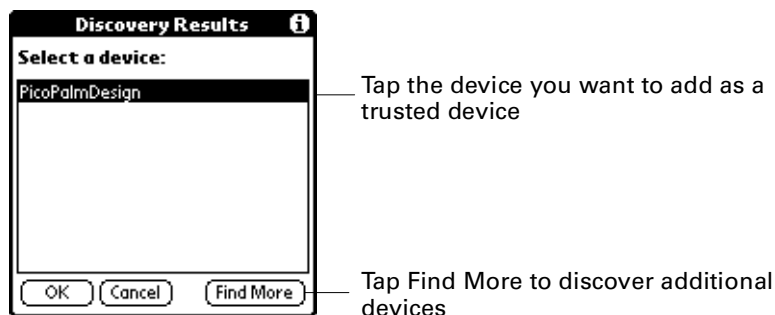
To add a trusted device:

1. On the Trusted Devices screen, tap Add Device.



The discovery process begins and one or more discovery screens appear.

2. When the Discovery Results screen appears, select the device you want to add as a trusted device. If the device you want to add as a trusted device does not appear on the discovery results list, tap Find More.





3. Enter a passkey for both your handheld and the trusted device, then tap OK. Depending on the device model, you may be able to choose the passkey to enter, or the device may have a passkey built in; see the documentation included with your device for information. In either case, you must use the same passkey for both the device and your handheld.
4. Tap Done to return to the Bluetooth Preferences screen.

Enabling/disabling the user cache

Enabling or disabling the user cache allows you to control whether or not your handheld must retrieve the names of remote devices each time the discovery process takes place. By default, the user cache is enabled, so that the names of devices found during one round of discovery will be stored in your handheld's user cache and will appear as options for discovery the next time you perform the connection/discovery process.

Using cached names saves time, because it eliminates the extra step of retrieving a name remotely. Disabling this feature is useful only if the name of a remote device has been changed, as it forces your handheld to go out and retrieve the new name of the device.


To enable or disable the user cache:

1. Tap the Applications icon .
2. Tap the Preferences icon .
3. Tap Bluetooth from the pick list in the upper-right corner.
4. Tap Preferences in the upper-left corner to open the Options menu.
5. Tap Enable device name cache or Disable device name cache. Only the option not currently in use is presented.


Using the Connection Preferences screen

You can perform the discovery/connection process to a remote device using the Connection Preferences screen on your handheld. See [“Methods of performing discovery/connection”](#) in [Chapter 3](#) for other methods of performing the discovery/connection process.

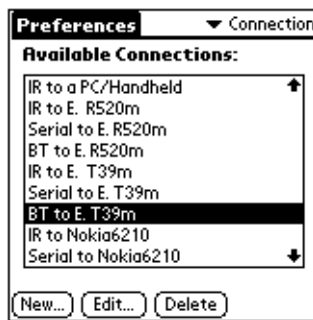
To create a connection with a phone:

1. Tap the Applications icon .

NOTE Only connections with GSM phones are supported to offer telephony features using Bluetooth technology. See [“Telephony features”](#) in [Chapter 4](#) for a description of telephony features. If you wish to connect with a non-GSM phone to access Internet-based features using Bluetooth technology (e-mail, Palm™ WAP Browser, web clipping), see [“Connecting to non-GSM phones”](#) later in this chapter.

2. Tap the Preferences icon .
3. Tap Connection from the pick list in the upper-right corner of the screen.
4. If the connection type that you wish to use appears on the Available Connections screen, tap the connection, and then tap Edit. Go to step 6.

If the connection type that you wish to use does not appear on the Available Connections screen, tap New.



5. Prepare your phone to accept a Bluetooth connection, and then tap Next.

NOTE See the documentation that was included with your phone for how to prepare your phone to accept a Bluetooth connection. The documentation might refer to a Bluetooth connection as a Bluetooth pairing or a Bluetooth link.

6. Do the following:
 - Enter a name for the connection.
 - Select Phone in the Connect to field.
 - Select Bluetooth in the Via field.
 - Select Tap to Find in the Device box.

If you selected an existing connection in step 4, select Tap to Find in the Device box only. The other fields are already properly configured for the connection.



If you chose the connection from the Available Connections list, select Tap to Find only

The discovery process begins. One or more discovery screens appear.

7. When the Discovery Results screen appears, select the phone with which you wish to connect, and then tap OK.

You must now create a trusted pair with the phone.

To create a trusted pair with a phone:

1. On the Connection screen, tap Yes.



2. Enter a passkey when prompted. Depending on the model of phone with which you are connecting, you may be able to choose the passkey to enter, or the phone may have a passkey built in; see the documentation included with your phone for information. In either case, you must use the same passkey for both the phone and your handheld.
3. Select the phone model in the Model field. If your phone model does not appear on the list, you can choose the default driver (Standard GSM Driver), or download the specific driver for your phone. See ["Phone drivers"](#) later in this chapter for more information.
4. Tap OK.
5. (Optional) Tap Yes to make this connection your default phone connection.

We recommend that you make the phone connection your default phone connection.



You will now be able to use SMS and wireless tap dialing. See the electronic *SMS Handbook* installed from the CD-ROM for information on using SMS. See ["Tap dialing"](#) in [Chapter 4](#) for information on using tap dialing.

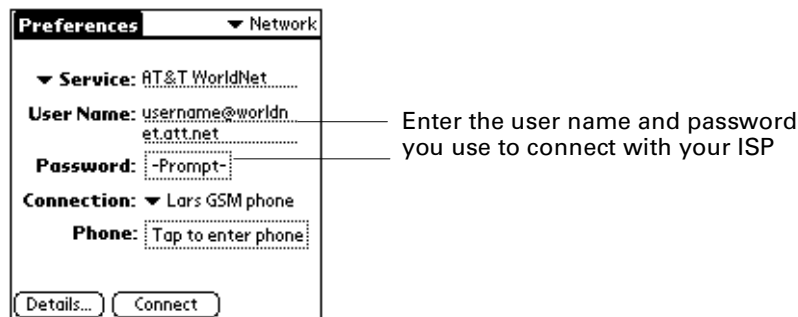
You have the option of using the phone connection to access the Internet.

To use a phone connection to access the Internet:

1. Create a connection with the phone as described in the steps above.
2. On the Edit Connection screen, tap OK to return to the Connection Preferences screen.





3. Tap Network from the pick list in the upper-right corner of the Connection Preferences screen.
4. On the Network Preferences screen, enter the information for your ISP.



5. Change the connection name to the name you created in step 6 of “To create a connection with a phone.”
6. Tap OK.

To create a connection with a laptop computer:

1. Tap the Applications icon .
2. Tap the Preferences icon .
3. Tap Connection from the pick list in the upper-right corner of the screen.
4. To use an existing connection, tap the connection on the Available Connections screen, and then tap Edit.

To create a new connection, tap New.



5. Do the following:
 - Enter a name for the connection.
 - Select PC in the Connect to field.
 - Select Bluetooth in the Via field.
 - Select Tap to Find in the Device box.

If you selected an existing connection in step 4, select Tap to Find in the Device box only. The other fields are already properly configured for the connection.



If you chose a connection from the Available Connections list, select Tap to Find only

The discovery process begins. One or more discovery screens appear.

6. When the Discovery Results screen appears, select the laptop with which you wish to connect, and then tap OK.
7. Tap OK.

Depending on the computer, you may be asked whether you want to create a trusted pair with the laptop computer. If you are asked, follow the steps below.

To create a trusted pair with a laptop computer:



1. From the Connection screen, tap Yes.



2. Enter the passkey when prompted, and tap OK.

Depending on the model of laptop with which you are connecting, you may be able to choose the passkey to enter, or the laptop may have a passkey built in. See the documentation included with your laptop for information. In either case, you must use the same passkey for both the laptop and your handheld.

To create a connection with a wireless LAN access point:

1. Tap the Applications icon .
2. Tap the Preferences icon .
3. Tap Connection from the pick list in the upper-right corner of the screen.
4. To use an existing connection, tap the connection on the Available Connections screen, and then tap Edit.

To create a new connection, tap New.



5. Do the following:
 - Enter a name for the connection.
 - Select Local Network in the Connect to field.
 - Select Bluetooth in the Via field.
 - Select Tap to Find in the Device box.

If you selected an existing connection in step 4, select Tap to Find in the Device box only. The other fields are already properly configured for the connection.



If you chose a connection from the Available Connections list, select Tap to Find only

6. Tap OK.

The discovery process begins. One or more discovery screens appear.

7. When the Discovery Results screen appears, select the wireless LAN access point with which you wish to connect, and then tap OK.

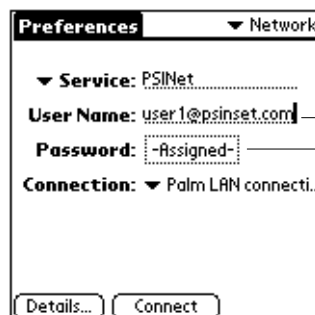
Depending on the network, you may be asked whether you want to create a trusted pair with the wireless LAN access point.

To create a trusted pair with a wireless LAN access point:

1. From the Connection screen, tap Yes.



2. Enter the passkey supplied by your system administrator, and then tap OK.
3. Tap Network from the pick list in the upper-right corner of the screen.
4. On the Network Preferences screen, enter the information for your ISP.



Enter the user name and password you use to connect to your ISP

5. Change the connection name to the name you created in step 4 of "To create a connection with a wireless LAN access point" above.
6. Tap OK.

Using the Network Preferences screen

You can customize the following settings from the Network Preferences screen:



- ISP settings
- Palm WAP Browser settings

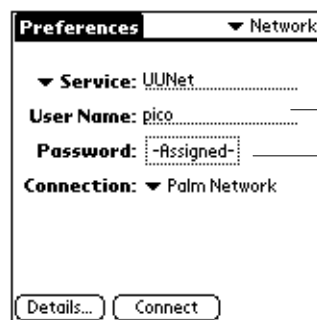
Customizing ISP settings

You have the option of changing the following settings on the Network Preferences screen when connecting to the Internet with an ISP using your mobile phone as a modem:

- Login name and password
- Phone number
- Timeout setting



To change your login name/password:

1. Tap the Applications icon .
2. Tap the Preferences icon .
3. Tap Network from the pick list in the upper-right corner of the screen.
4. Do one or both of the following:
 - To change login name: Enter new name in User Name field.
 - To change password: Tap in Password box, enter new password, and tap OK.



Enter new user name and password if, for example, you are required to update user name/password at regular intervals by your system administrator

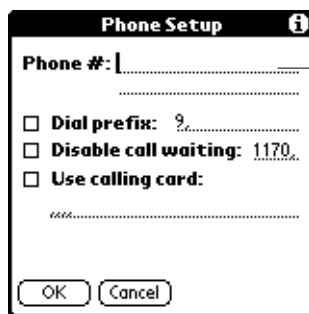
To change phone number:

1. Tap the Applications icon .
2. Tap the Preferences icon .
3. Tap Network from the pick list in the upper-right corner of the screen.

4. Do the following:
 - Select the ISP for the phone whose number you wish to change in the Service field.
 - Select Tap to enter phone in Phone box.





5. Enter the new phone number.



Enter new phone number if, for example, you are traveling and want to use a local number to access your ISP

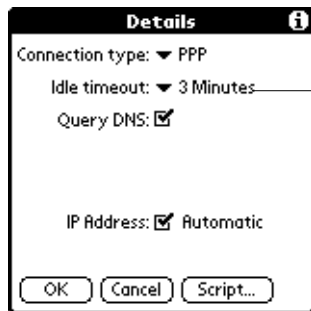
6. Tap OK.

To change the timeout setting:

1. Tap the Applications icon .
2. Tap the Preferences icon .
3. Tap Network from the pick list in the upper-right corner of the screen.
4. Tap Details.



5. Tap the Idle timeout field to change the timeout setting.



We recommend that you change the timeout setting to 3 minutes



Customizing Palm WAP Browser settings

To customize Palm WAP Browser settings, see the electronic documentation on the Palm WAP Browser installed from the CD-ROM.

Connecting to non-GSM phones

If you have a non-GSM phone enabled with Bluetooth technology, you can connect with the phone from your handheld to access the Internet and use Internet-based features such as e-mail, Palm WAP Browser, and web clipping.

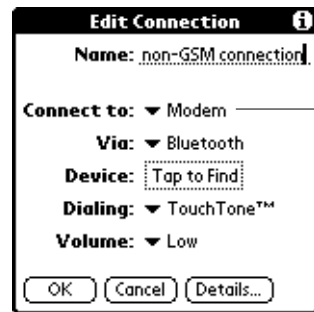
To create a connection with a non-GSM phone:

1. Tap the Applications icon .
2. Tap the Preferences icon .
3. Tap Connection from the pick list in the upper-right corner of the screen.
4. Tap New.
5. Prepare your phone to accept a Bluetooth connection, and then tap Next.

NOTE See the documentation that was included with your phone for how to prepare your phone to accept a Bluetooth connection. The documentation might refer to a Bluetooth connection as a Bluetooth pairing or a Bluetooth link.

6. Do the following:
 - Enter a name for the connection.
 - Select Modem in the Connect to field.

- Select Bluetooth in the Via field.
- Select Tap to Find in the Device box.



You must select Modem rather than Phone in the Connect to field to connect with a non-GSM phone

The discovery process begins. One or more discovery screens appear.

7. When the Discovery Results screen appears, select the phone with which you wish to connect, and then tap OK.



Tap here to select the phone with which you wish to connect

Tap Find More to discover additional phones

You now have the option of creating a trusted pair with the phone. To use Bluetooth technology with a phone, you must create a trusted pair.

To create a trusted pair with a non-GSM phone:

1. Create a connection with the non-GSM phone as described in the steps above.
2. On the Connection screen, tap Yes.



The discovery process begins. One or more discovery screens appear.



3. Enter a passkey when prompted. Depending on the model of phone with which you are connecting, you may be able to choose the passkey to enter, or the phone may have a passkey built in; see the documentation included with your phone for information. In either case, you must use the same passkey for both the phone and your handheld.
4. Tap OK.

Connecting to a GPRS network

GPRS (General Packet Radio Service) is high-speed packet data technology that provides users with “always on” network connectivity and high-speed wireless data transmission from their GSM phone. With the Bluetooth Card, you can connect to a GPRS network wirelessly from your handheld using your mobile phone.

NOTE To connect to a GPRS network, you must have a GSM mobile phone equipped with GPRS services and a wireless operator that supports GPRS services.

To connect to a GPRS network:

1. Be sure your GPRS services are turned on. Refer to the documentation included with your mobile phone for instructions.
2. Tap the Applications icon .
3. Tap the Preferences icon .
4. Tap Connection from the pick list in the upper-right corner of the screen.
5. Tap New.
6. Do the following:
 - Enter a name for the connection.
 - Select Local Network in the Connect to field.
 - Select Bluetooth in the Via field.
 - Select Tap to Find in the Device box.



You must select Local Network rather than Phone in the Connect to field to connect to a GPRS network

The discovery process begins. One or more discovery screens appear.

7. When the Discovery Results screen appears, select the phone you are using to connect to a GPRS network, and then tap OK.


Depending on the network, you may be asked whether you want to create a trusted pair with the GPRS network.

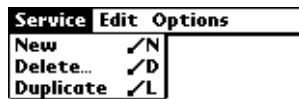
To create a trusted pair with a GPRS network:

1. From the Connection screen, tap Yes.
2. Enter a passkey when prompted. Depending on the GPRS network with which you are connecting, you may be able to choose the passkey to enter, or the network may have a passkey built in; see the documentation included with your phone for information. In either case, you must use the same passkey for both the network and your handheld.
3. Tap OK.

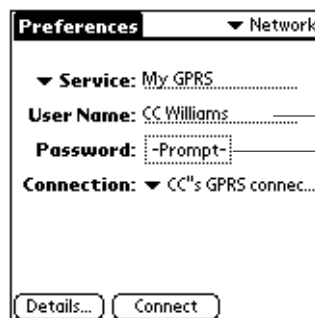
You must then create a new service for use with the GPRS network.

To create a new service for use with the GPRS network

1. Create a connection with the GPRS network as described in the steps above.
2. Tap Network from the pick list in the upper-right corner of the screen.
3. Tap the Menu icon , and then tap New on the Service menu.



4. On the Network screen, enter a service name (this can be anything you choose), and then enter your user name and password. These may be supplied to you by your wireless operator.



Enter user name and password supplied by your wireless operator

5. Change the connection name to the name you created in step 6 of "To connect to a GPRS network."

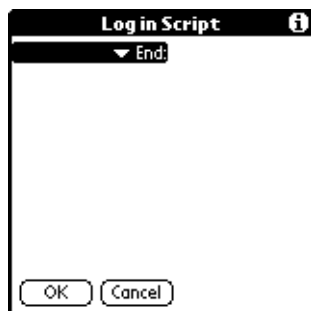
Finally, you must send an INIT string to notify your phone to switch to GPRS mode when you connect with the phone using your GPRS connection.

To send an INIT string:

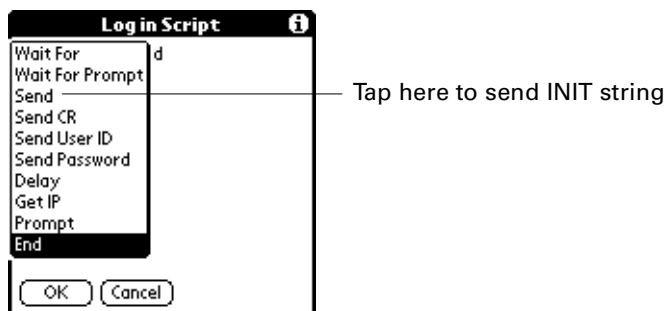
1. After entering the connection name in step 5 above, tap Details.



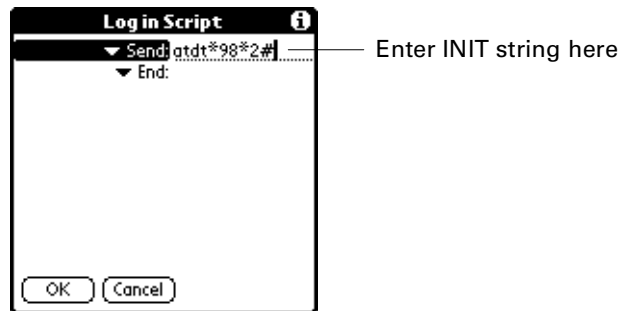
2. Tap Script.



3. Tap End to expand the pick list, and then tap Send.



4. Enter the INIT string provided by your wireless operator in the Send field.



5. Tap OK.

GPRS services are not available in all locations. If you pass from an area with GPRS coverage into one without coverage, you will lose your network connection with no notice.

If your network connection drops unexpectedly, check your phone to see if a GPRS network is active and available for the area you are in. If a GPRS network is available, reconnect to the network using the steps above.

If no GPRS network is available, you must switch your phone to a standard (non-GPRS) phone connection and access the Internet using your ISP. You can only do this if you have previously created a non-GPRS connection with your phone. See [“Switching connections to the same type of device”](#) later in this chapter.

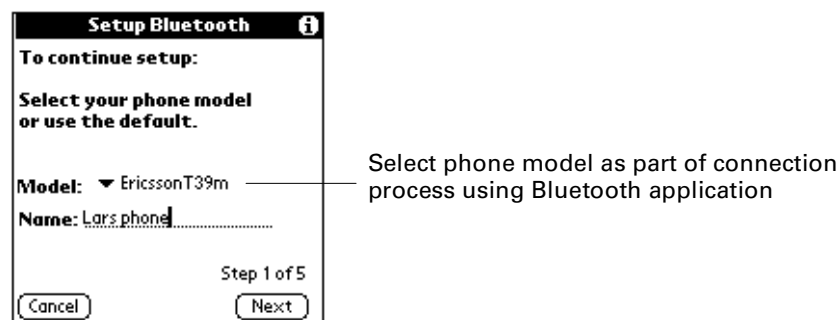
Phone drivers

The following information applies to GSM phones only.

The Bluetooth application provides a generic GSM phone driver as the default. To optimize your telephony experience, we recommend that you obtain the phone driver that maps to your particular phone.

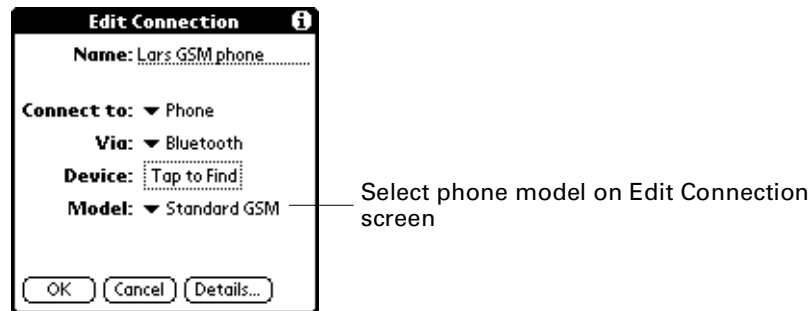
You can select the phone driver that maps to your phone in one of three ways:

- When you set up a connection to your phone using the Bluetooth application, you will be given the option to select the phone driver from a pick list as part of the connection process.



See “Connecting using the Bluetooth application” in Chapter 3 for more information.

- When you set up a connection to your phone using the Connection Preferences screen, you will be given the option to choose the phone model on the Edit Connection screen. If your phone appears on the model list, select the phone name. The correct driver will be installed automatically.





- If your phone model does not appear on the Bluetooth application or Connection screen list, select the default driver (Standard GSM), or go to www.palm.com or www.palm.com/intl/ to download the appropriate driver. Be sure to perform a HotSync operation to install the driver to your handheld after downloading the driver.

Switching connections to the same type of device

In addition to switching between a phone connection and a wireless LAN access point connection (see Chapter 3), you can also switch from one phone connection to another, or one wireless LAN access point connection to another.

Before you can switch between connections to the same type of device, you must pair with both devices of that type, that is, with both phones or both wireless LAN access points. See Chapter 3 for instructions on connecting using the Bluetooth application; see “Using the Connection Preferences screen” earlier in this chapter for instructions on connecting using the Connection Preferences screen.

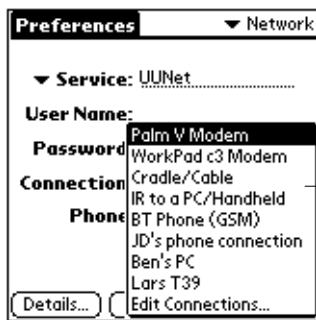
To switch between connections to the same type of device:

1. Tap the Applications icon .
2. Tap the Preferences icon .

3. Tap Network from the pick list in the upper-right corner of the screen.



4. Tap the Connection field and select the new phone or wireless LAN access point connection with which you wish to connect.



Switch between phone and phone or wireless LAN access point and wireless LAN access point here



5. Tap Connect.

HotSync operation with your computer

HotSync operations exchange and update data between your handheld and your computer. With the Bluetooth Card, you can perform wireless HotSync operations.

NOTE You must have a computer running Windows 2000 to perform wireless HotSync operations with the Bluetooth Card. Go to www.palm.com/bluetooth for updates.

To enable wireless HotSync operations:

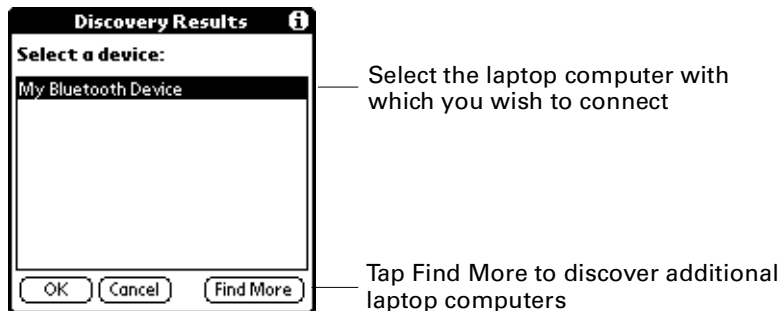
1. Tap the Applications icon .
2. Tap the Preferences icon .
3. Tap Connection from the pick-list in the upper-right corner.
4. Tap New, and then do the following:
 - Enter a name for the connection.
 - Select PC in the Connect to field.

- Select Bluetooth in the Via field.
- Select Tap to Find in the Device box.



The discovery process begins. One or more discovery screens appear.

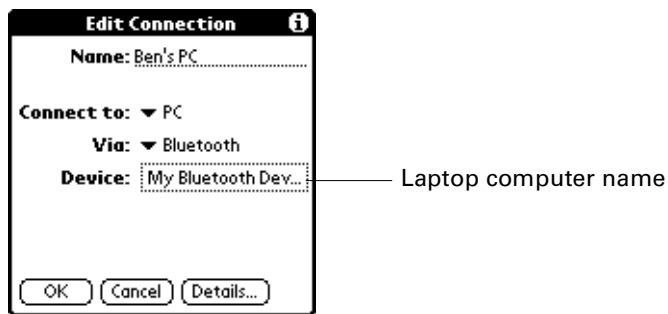
5. When the discovery results list screen appears, tap the name of your laptop computer, and then tap OK.



You will be asked if you want to create a trusted pair with the laptop. To do so, tap Yes, enter the passkey, and then tap OK. To decline, tap No. To perform a wireless HotSync operation, you must tap Yes; tapping No ends the process.





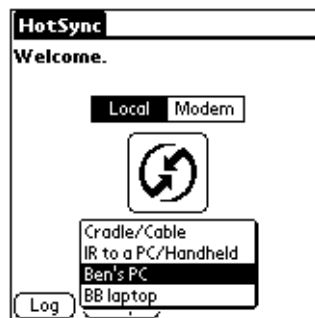
Your computer name will now appear in the Device box on the Edit Connection screen.




You must now select the HotSync operation settings you just created on both your handheld and your laptop computer.

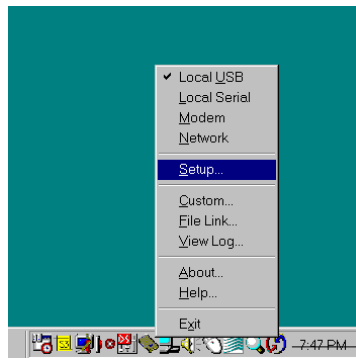
To select the HotSync operations on your handheld:

1. Tap the Applications icon .
2. Tap the HotSync icon ™.
3. Tap the pick-list in the center of the screen to select the connection settings you just created.



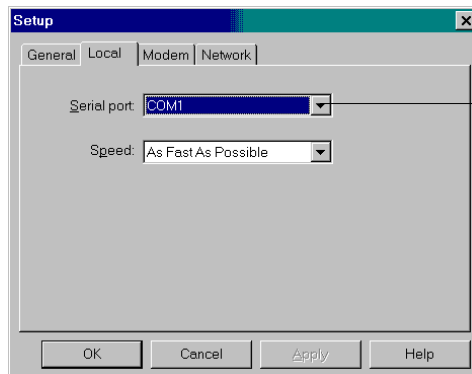
To select the HotSync operations on your laptop computer:

1. If your laptop gives you the option to change the port settings for HotSync operation, change the settings to make the COM8 or COM12 port available. See the documentation included with your laptop for instructions. The documentation might refer to changing port settings for HotSync operation as configuring the Bluetooth serial host.
2. Right-click the HotSync icon  on your laptop task bar, and then select Setup.



Right-click the HotSync icon

3. Select the Local tab.



Select the port from the drop-down list

4. In the Serial port drop-down box, select the port you chose in step 1.
5. Click OK.

To perform a wireless HotSync operation once settings are finalized:

- Press the HotSync button  on your handheld.

Performance Issues

This chapter describes issues affecting the performance of the Palm™ Bluetooth Card on your handheld, including the following:

- Latency
- Usage environments
- Power management

Latency

Latency is the amount of time required to establish a connection to a remote device or devices. Latency rates for the Bluetooth Card are as follows:

- Discovering one or more unknown devices requires ten seconds or more to discover all devices within range. An additional two seconds or more is required to retrieve any device name that is not already stored in the cache.
- Connection time to a device the user has previously discovered (selected from the cache) will be one second or less.

NOTE You may need to perform the discovery process several times to discover a device within range. See [Chapter 3](#) for more information.

Usage environments

Environmental parameters affecting use of the Bluetooth Card are as follows:

- Distance between devices is 10 meters (approximately 30 feet)
- Depending on the specific environment, walls, floors, ceilings, or briefcases may limit or prevent communication between devices

Power management

Power management issues impacting use of the Bluetooth Card are as follows:

- If you use the Bluetooth Card regularly to connect with other devices, the battery of your handheld will drain more quickly than if you did not have the card inserted. Actual battery drain will depend on the type of device with which you are connecting, and the task you are performing.
- When the battery drops below 20 percent capacity, the card is disabled and charging is required. The card can stay in this state for approximately one week without loss of data.
- Palm OS® software manages battery usage on your handheld to help maximize battery life. For example, when your handheld is in sleep mode, the Bluetooth Card is turned off.

Connection Security

Bluetooth technology utilizes passkey exchange to enhance connection security.

Passkeys

Some remote devices (particularly mobile phones) require you to enter a passkey in order to connect to the device. A passkey is a unique identifier that enables secure data exchange between the connected devices.

If a device requires you to enter a passkey, you will be prompted to enter the passkey when you attempt to connect with the device. When you tap OK, the passkey is sent to the remote device. One of the following will occur:

- **Passkey authentication succeeds:** Connection is made to the remote device.
- **Passkey authentication fails:** You must retry to connect to the device.

See [Chapter 3](#) and [Chapter 5](#) for descriptions of when you may be asked to enter a passkey when connecting with a remote device.

Trusted pairs

When you exchange passkeys with another device, you form a trusted pair with that device. Any time you connect with another device, the application through which you are connecting may ask you to form a trusted pair.

Bluetooth technology provides 128-bit encryption for trusted pairs that individual applications may use to secure transmissions between the trusted pair devices. This encryption is in addition to any encryption that the application itself may provide with regard to that transmission.

When you create a trusted pair with a device, you can connect to that device at any time in the future without entering a passkey.

You have two options for creating a trusted pair, as follows:

- Trusted pair dialog box appears automatically as part of the discovery/connection process using the Bluetooth application or the Connection Preferences screen.
- Create a trusted pair using the Bluetooth Preferences screen.

NOTE See [Chapter 3](#) for information on creating a trusted pair as a part of the discovery/connection process using the Bluetooth application. See [“Using the Connection Preferences screen”](#) in [Chapter 5](#) for information on creating a trusted pair as part of the discovery/connection process using the Connection Preferences screen. See [“Using the Bluetooth Preferences screen”](#) in [Chapter 5](#) for information on creating a trusted pair using the Bluetooth Preferences screen.

Frequently Asked Questions

If you encounter a problem using the Palm™ Bluetooth Card, do not call Technical Support until you have reviewed the following list of frequently asked questions, and you have also reviewed the following:

- The README file located in the folder from which you installed the Bluetooth Card software.
- The “Palm Support Assistant” knowledgebase, accessible at www.palm.com under the Support section.

If you are still having problems, contact Technical Support. For US and international phone numbers, go to www.palm.com.

Installation/operation problems

Problem	Solution
I cannot see any of the applications installed with the Bluetooth Card on my handheld.	If you have multiple users on your Palm Desktop software, make sure that you are installing the files to the correct user name. In addition, all files must be loaded onto the handheld. You cannot install the Bluetooth Card files onto the card itself.
I get an error message when I try to launch one of the applications installed with the Bluetooth Card.	Make sure that the Bluetooth Card is seated properly in the handheld. See “Using the card” in Chapter 2 for directions on how to insert the card.

Phone connection problems

Problem	Solution
I get an error message when I try to dial a phone number using my handheld.	You may need to go through the discovery process on both the phone and your handheld. Before you go through the discovery process on the handheld, make sure your mobile phone is equipped with Bluetooth technology and is set to discoverable. See the documentation included with your phone for assistance.

My handheld cannot discover my mobile phone.	You may need to go through the discovery process on both the phone and your handheld. Before you go through the discovery process on the handheld, make sure your mobile phone is equipped with Bluetooth technology and is set to discoverable. See the documentation included with your phone for assistance.
My mobile phone cannot locate my handheld.	Make sure that the Bluetooth Card is seated properly in the handheld. See “Using the card” in Chapter 2 for directions on how to insert the card.
My handheld cannot seem to make a connection to my phone equipped with Bluetooth technology.	On the Connection Preferences screen, check to make sure that you have “Bluetooth” as a connection option in the Via field. Your applications will need to utilize this setting to connect via Bluetooth technology to your phone.

Glossary

BlueBoard	Whiteboard application that allows handheld users utilizing Bluetooth technology to collaborate on drawings.
BlueChat	Messaging application that allows handheld users with Bluetooth technology to exchange text in real time.
Bluetooth application	Application that provides a step-by-step interface for connecting to a phone, laptop computer, or wireless LAN access point.
Bluetooth Card	<i>see</i> Palm Bluetooth Card.
Bluetooth technology	Technology enabling flexible, inexpensive, easy-to-use wireless connectivity between devices; underlying technology of the Palm™ Bluetooth Card.
device name	1. Name that appears on your handheld when you discover another device within range; 2. Name that other users see when they discover/connect with your handheld.
discovery	Process of finding and connecting with one or more devices equipped with Bluetooth technology.
GPRS	General Packet Radio Service; high-speed packet data technology enabling “always on” network connectivity and high-speed wireless data transmission from a GSM phone.
GSM	Global System for Mobile Communications; digital technology providing integrated voicemail, high-speed data, fax, paging, and SMS capabilities for GSM mobile phone subscribers.
host	User who initiates a connection with other users in a Bluetooth Card collaborative application.
HotSync® operation	Procedure that exchanges and updates data and applications between your handheld and your computer.
ISP	Internet Service Provider; service provider enabling dial-up access to the Internet.
latency	Amount of time required to establish a connection to a remote device or devices.

login name	Name to enter to connect to a network.
Palm Bluetooth Card	Secure Digital IO expansion card that enables Bluetooth functionality on your Palm™ handheld.
Palm WAP Browser	Browser enabling you to view specially formatted WAP pages from the Internet.
partner	User who receives and responds affirmatively to an invitation to connect from a host in a Bluetooth Card collaborative application.
passkey	Unique identifier enabling secure data exchange between two devices equipped with Bluetooth technology that have formed a connection with one another.
piconet	Small network of up to four devices connected by Bluetooth technology and able to collaborate and exchange data.
Send	Handheld function enabling you to share business cards, calendar events, and other files with other handheld users.
SMS	Short Messaging Services; application enabling exchange of simple text messages among users who have access to SMS services.
trusted pair	Device with which you have exchanged and stored passkey information, enabling your handheld to connect to that device at any time in the future without entering a passkey.
web clipping application	Application enabling you to retrieve specific information from the Internet using a query-and-response process.
wireless LAN access point	Device providing a wireless entry point into a local area network; often located in meeting areas or public spaces.

Product Regulatory and Safety Information

FCC Statement

This device complies with part 15 of the FCC rules. Operation is subject to the following two conditions: (1) This device may not cause harmful interference, and (2) this device must accept any interference received, including interference that may cause undesired operation.

NOTE This equipment has been tested and found to comply with the limits for a Class B digital device, pursuant to Part 15 of the FCC rules. These limits are designed to provide reasonable protection against harmful interference in a residential installation. This equipment generates, uses, and can radiate radio frequency energy and, if not installed and used in accordance with the instructions, may cause harmful interference to radio communications. However, there is no guarantee that interference will not occur in a particular installation. If this equipment does cause harmful interference to radio or television reception, which can be determined by turning the equipment off and on, the user is encouraged to try to correct the interference by one or more of the following measures:

- Reorient or relocate the receiving antenna.
- Increase the separation between the equipment and receiver.
- Connect the equipment into an outlet on a circuit different from that to which the receiver is connected.
- Consult the dealer or an experienced radio/TV technician for help.

The use of shielded I/O cables is required when connecting this equipment to any and all optional peripheral or host devices. Failure to do so may violate FCC rules.

CAUTION Changes or modifications not covered in this manual must be approved in writing by the manufacturer's Regulatory Engineering Department. Changes or modifications made without written approval may void the user's authority to operate this equipment.

Responsible Party:

Palm, Inc.
5470 Great America Parkway
Santa Clara, California 95052
United States of America
(408) 878-9000

Palm™ Bluetooth Card



**Tested to Comply
With FCC Standards**

FOR HOME OR OFFICE USE

MPE (Maximum Permissible Exposure) Statement

RF Exposure Compliance:

In order for this device to comply with FCC rules, under the provision of Part 15.247(b)(c), it must operate in a manner that ensures that the public is not exposed to radio frequency energy levels in excess of the Maximum Permissible Limits (MPE).

It is recommended that the antenna of this device be placed at 20 cm or more from its user and any nearby persons, during continuous and extended data transmission. The users of this device should ensure that the operation of this device is in compliance with these provisions.

Canadian IC Notice

Certification No: 248104311A

To prevent radio interference to the licensed service, this device is intended to be operated indoors and away from windows to provide maximum shielding. Equipment that is installed outdoors is subject to licensing.

Canadian ICES-003 Statement

This Class B digital apparatus meets all requirements of the Canadian Interference-Causing Equipment Regulations.

Cet appareil numérique de la classe B respecte toutes les exigences du Règlement sur le matériel brouilleur du Canada.

FAA Statement

Whenever you use the wireless features of your handheld, please observe the guidelines or prohibitions on the use of wireless devices in your current location. For example, when you are on an airplane, do not use your Bluetooth Card at times when government or airline regulations prohibit the use of cellular phones. You can, of course, use all other applications on your handheld in accordance with airline regulations for electronic devices.

Electrical Transmission Statement

This product has been certified as conforming to technological standards for a wireless device as a small electrical data transmission under electrical transmission law. Therefore, you do not need a license from a government agency to operate this product.

This product has been certified as conforming to technological standards. Therefore, the following action are punishable by law:

Disassembly or modification of this product.

Removal of identification labels on the back of this product.

ARIB STD-T66 Statement (Japan)

This product uses a radio wave in the 2.4 GHz bandwidth. This frequency is also used by the microwave ovens industry, scientific and medical devices, in addition to wireless transmitters for motion detectors, such as those requiring licenses used on manufacturing lines or similar radio transmitters. It is also used in specified amateur radio stations or small radio stations not requiring licenses (all these wireless devices will be called "other wireless transmitters" below).

1. Before using this product, confirm that other wireless transmitters are not in use nearby.
2. In the unlikely event that there is electronic interference between this product and other wireless transmitters, quickly change the operating frequency of this product, change the location of operation, or stop operating the product (cease transmission of a signal).
3. If other electrical interference or related problems should occur, contact the responsible party.

Europe R&TTE Directive (Europe)

Declaration of Conformity

Application of Council Directive(s): 1999/5/EEC, R&TTE EU Directive

Standards to which Conformity is Declared:

EMC standard ETSI 300 826

Radio standard ETSI 300 328-2

Safety standard EN69950

Manufacturer's Name: Palm, Inc.

Manufacturer's Location: 5470 Great America Pkwy
Santa Clara, CA 95052
USA

Importer's Name: Palm Germany GmbH

Importer's Location: Landsberger Strasse 155
D-80687 Munchen, Germany

Type of Equipment: Palm™ Bluetooth Card

Model Number: SD-BT00P

Year of Manufacture: 2001

Applicable countries complying with this declaration: Austria, Belgium, Denmark, Finland, France, Germany, Greece, Iceland, Ireland, Italy, Luxembourg, Norway, Portugal, Spain, Sweden, Switzerland, Holland, UK.

I, the undersigned hereby declare that the equipment specified above conforms to the above Directive(s) and Standard(s)

Place: Santa Clara, CA

Signature: _____

Date: Oct. 29. 2001

Typed Name: David Woo

Title: Global Compliance Manager

Taiwan Statement

Article 14: Unless approved, for any model accredited low power radio frequency electric machinery, any company, trader, or user shall not change the frequency, increase the power, or change the features and functions of the original design.

Article 17: Any use of lower power radio frequency electric machinery shall not affect the aviation safety and interfere with legal communications. In even that any interference is found, the use of such electric machinery shall be stopped immediately, and reusing of such products cannot be resumed until no interference occurs after improvement.

The legal communications mentioned in the above item refer to radio communications operated in accordance with telecommunication laws and regulations.

Low power radio frequency electric machinery shall resist against interference from legal communications or from industrial, scientific, and medical radio electric machinery.

Product Safety Information

Following are some precautionary statements to help guarantee safe and long-term use of the Bluetooth Card.

- Do not perform disassembly, modifications, or repairs on the card—there is a danger of fires, electrical shock, damage to the card, and injury.
- Do not remove the label, and do not paste on other labels—dismantling this product will invalidate the warranty and any other service plan.
- Those with a pacemaker should operate the card from a minimum distance of 22 centimeters or more—electrical signals may cause abnormalities in pacemaker operation.
- Do not use the card in the bath, or in any other area where there is a chance of submersion or high humidity—doing so creates a risk of electrical shock.
- Do not insert staples or paper clips into the card slot on the handheld—doing so creates a risk of electrical shock, smoke, or fire.
- Do not use the card in a location exposed to rain or mist—rain or mist on the card or in the card slot may cause fire or electrical shock.
- Do not place the card in direct sunlight, in a closed car, near a heating device, or in any other location where high temperature is a possibility—doing so may cause damage to the card, malfunction, or internal memory loss.
- Do not place the card in any location susceptible to extremely low temperatures—doing so may cause damage to the card, malfunction, or internal memory loss.
- Do not subject the card to rapid temperature changes—dew formation may cause damage to the card, malfunction, or internal memory loss.

A

- Address book tap dialing
 - defined 23
 - enabling 24
 - using 25
- Applications included on the CD-ROM 7

B

Battery life. *See* Power management

BlueBoard

- blocking requests for connection 29, 31
- color legend 31
- color palette 31
- connecting with partners 27–29
- defined 7, 26, 71
- discovery process 27
- End button 30
- Erase button 30
- Find More button 28
- functions 30
- host 26
- Options menu 31
- partners 26
- pen palette 30
- recent contributors 30
- Share button 27
- using 26–31

BlueChat

- active area 35
- blocking requests for chat 33, 37
- Chat button 32
- connecting with a partner 32–34
- defined 7, 26, 71
- discovery process 32
- Emoticon button 35, 36
- End button 35
- Find More button 32
- font selection 37
- Frequent phrase button 35, 36
- host 32

- input area 35
- Options menu 36
- partner 32
- recent contributors 34
- Send button 35
- using 32–37

Bluetooth application

- accessing the Internet using your phone
 - connection 17–18
- connecting with a laptop computer
 - 18–20
- connecting with a phone 14–18
- connecting with a wireless LAN access point 20–21
- connecting with other devices 12–21
- creating a trusted pair with a phone 15
- defined 7, 71
- entering passkey when connecting with a laptop computer 19
- entering passkey when connecting with a phone 16
- entering passkey when connecting with a wireless LAN access point 21
- selecting phone driver 59–60
- setting up service with a new ISP 17–18
- standard GSM phone driver 59, 60
- switching between a phone connection and a wireless LAN access point connection 22

Bluetooth Card. *See* Palm Bluetooth Card

Bluetooth link. *See* Connection

Bluetooth pairing. *See* Connection

Bluetooth Preferences screen

- adding trusted devices 44
- deleting trusted devices 43–44
- enabling/disabling Bluetooth functionality on your handheld 42
- enabling/disabling the user cache 45
- setting device name on your handheld 42

- setting your handheld to be
 - discoverable/not discoverable 42
- using 41–45
- viewing and managing trusted devices 43

Bluetooth technology

- defined 2–3, 71
- encryption 67

Bluetooth. *See* Bluetooth application

C

CD-ROM

- applications included on 7
- installing software 5

Collaborative applications 26–37

- BlueBoard 26, 26–31
- BlueChat 26, 32–37
- See also* BlueBoard, BlueChat

Computer. *See* Laptop computer

Connecting

- devices with which you can connect 11–12
- discovery process 11
- maximum distance between devices 65
- time required to connect with a device 65
- using the Bluetooth application 12–21
- using the Connection Preferences screen 45–51
- with a GPRS network 56–59
- with a laptop computer using the Bluetooth application 18–20
- with a laptop computer using the Connection Preferences screen 48–50
- with a non-GSM phone 54–56
- with a phone using the Bluetooth application 14–18
- with a phone using the Connection Preferences screen 45–48
- with a wireless LAN access point using the Bluetooth application 20–21
- with a wireless LAN access point using the Connection Preferences screen 50–51
- with another handheld using the BlueChat application 32–34

- with other devices 11–22
- with other handhelds using the BlueBoard application 27–29

Connection

- device requirements for 12
- methods of performing
 - discovery/connection 12
- requirements for connection 12
- switching between a phone connection and a wireless LAN access point connection 22
- switching connections to the same type of device 60–61
- switching from one phone connection to another 60–61

Connection Preferences screen

- accessing the Internet via a phone connection 48
- connecting with a laptop computer 48–50
- connecting with a phone 45–48
- connecting with a wireless LAN access point 50–51
- creating a trusted pair with a laptop computer 50
- creating a trusted pair with a phone 47
- creating a trusted pair with a wireless LAN access point 51
- selecting phone driver 59–60
- using 45–51

Connection security 3, 67–68

- encryption 67
- passkeys 67–68
- trusted pairs 67–68

D

Device name

- defined 71
- enabling/disabling the user cache 45
- setting on your handheld 42

Devices

- requirements for connection 12
- types of devices with which you can connect 11–12

Dial-up networking 2

Direct access networking 3

Discovery

- and connection process 11

- and connection using the Bluetooth application 12–21
- and connection using the Connection Preferences screen 45–51
- defined 11, 71
- enabling/disabling the user cache 45
- in BlueBoard application 27
- in BlueChat application 32
- methods of performing
 - discovery/connection 12
- results when connecting with a laptop computer using Bluetooth application 19
- results when connecting with a phone using Bluetooth application 15
- results when connecting with a wireless LAN access using Bluetooth application 21
- setting your handheld to be
 - discoverable/not discoverable 42
- time required to discover a device 65

E

E-mail

- sending and receiving using your mobile phone as a modem 23
- sending and receiving via a wireless LAN access point 39

Enabling/disabling Bluetooth functionality on your handheld 42

Encryption 67

F

FAQ. *See* Frequently Asked Questions

FCC Statement 73

Finding other devices. *See* Discovery

Frequently Asked Questions 69–70

README file 69

G

General Packet Radio Service. *See* GPRS network

Global System for Mobile Communications.

See GSM phones

Glossary 71

GPRS network

- and GSM phones 56

- connecting to 56–59

- connecting via Bluetooth 3

- creating a trusted pair 57

- defined 71

- GPRS defined 56

- loss of network connection 59

- sending an INIT string 58–59

- service limitations 59

GSM phones

- accessing the Internet 17–18, 48

- and GPRS networks 56

- connecting using the Bluetooth application 14–18

- connecting using the Connection Preferences screen 45–48

- connection requirements 13

- creating a trusted pair using the Bluetooth application 15–16

- creating a trusted pair using the Connection Preferences screen 47

- driver 59, 60

- entering passkey to create a trusted pair using the Bluetooth application 16

- GSM defined 71

- preparing for discovery 14

- preparing to accept a Bluetooth connection 15

- setting up service with a new ISP 17–18

- switching between a phone connection and a wireless LAN access point connection 22

- telephony features supported 24

GSM phones. *See also* Non-GSM phones

H

Host

- defined 71

- in BlueBoard application 26

- in BlueChat application 32

HotSync

- changing port settings on your laptop computer 64

- creating a trusted pair with your laptop computer 62

- defined 71
- enabling 61–63
- performing wireless HotSync operation 64
- selecting HotSync operations on your handheld 63
- selecting HotSync operations on your laptop computer 64

I

- INIT string, sending 58–59
- Inserting the Palm Bluetooth Card 9
- Installation/operation problems 69–70
- Installing optional applications 8
- Installing the software 5
- Internet
 - accessing using your phone connection 17–18, 48
 - accessing via a wireless LAN access point 39
 - customizing ISP settings 52–54
 - entering ISP information 48
 - setting up service with a new ISP 17–18
 - using non-GSM phones to access 54
- Internet Service Provider. *See* ISP
- ISP
 - changing the timeout setting 53–54
 - changing your login name and password 52
 - changing your phone number 52–53
 - connecting to the Internet via 2
 - customizing ISP settings 52–54
 - defined 71
 - entering ISP information 48
 - setting up service with a new ISP 17–18

L

- LAN access point. *See* Wireless LAN access point
- Laptop computer
 - changing port settings for HotSync operation 64
 - connecting using the Bluetooth application 18–20
 - connecting using the Connection Preferences screen 48–50

- creating a trusted pair as part of HotSync operation 62
- creating a trusted pair using the Connection Preferences screen 50
- enabling HotSync operation 61–63
- entering passkey to create a trusted pair 19
- HotSync operation 61–64
- performing wireless HotSync operation 64
- selecting HotSync operations on your handheld 63
- selecting HotSync operations on your laptop computer 64

Latency 65, 71

Link. *See* Connection

Local area network. *See* Wireless LAN access point

Login name

- changing your login name and password 52
- defined 72

M

- MultiMail SE 8

N

- Network Preferences screen
 - changing the timeout setting 53–54
 - changing your login name and password 52
 - changing your phone number 52–53
 - customizing ISP settings 52–54
 - customizing Palm WAP Browser settings 54
 - entering ISP information 48
 - using 52–54
- Non-GSM phones
 - connecting 54–56
 - connection requirements 13
 - creating a trusted pair 55–56
- Non-GSM phones. *See also* GSM phones

P

Pairing. *See* Connection

Palm Bluetooth Card

- advanced user functions 41
- applications installed during software installation 7

- Bluetooth Preferences screen. *See* Bluetooth Preferences screen

- CD-ROM installation 5

- defined 72

- features 23–39

- inserting 9

- installing optional applications 8

- overview 1–3

- preparing to use 5–10

- removing 9

- software installation 5–8

- software installation for Mac 6–7

- software installation for Windows 5–6

- telephony features 23–25

- usage tips 10

- using 8–10

Palm Support Assistant knowledgebase 69

Palm WAP Browser

- customizing Palm WAP Browser settings 54

- defined 23, 72

Partners

- defined 72

- in BlueBoard application 26

- in BlueChat application 32

Passkeys

- defined 72

- encryption 67

- entering to create a trusted pair with a GPRS network 57

- entering to create a trusted pair with a laptop computer 19, 50

- entering to create a trusted pair with a non-GSM phone 56

- entering to create a trusted pair with a phone 16, 47

- entering to create a trusted pair with a wireless LAN access point 21, 51

- trusted pairs 67–68

Password

- changing your login name and password 52

PC. *See* Laptop computer

Phone connection problems 69–70

Phone drivers

- downloading from the web 60

- selecting 59–60

- standard GSM phone driver 59, 60

Phone models

- selecting a phone model using the Bluetooth application 14

- selecting a phone model using the Connection Preferences screen 47

Phone number, changing 52–53

Phones

- accessing the Internet 17–18, 48

- connecting using the Bluetooth application 14–18

- connecting using the Connection Preferences screen 45–48

- creating a trusted pair using the Bluetooth application 15–16

- creating a trusted pair using the Connection Preferences screen 47

- customizing ISP settings 52–54

- entering ISP information 48

- entering passkey to create a trusted pair using the Bluetooth application 16

- features. *See* Telephony features
- preparing to accept a Bluetooth connection 15

- preparing your for discovery 14

- setting up service with a new ISP 17–18

- standard GSM phone driver 59, 60

- switching between a phone connection and a wireless LAN access point connection 22

- switching from one phone connection to another 60–61

- See also* GSM phones, Non-GSM phones

Piconet 3

- defined 72

Power management 3, 66

PQA files. *See* Web clipping application files

Problems using the Palm Bluetooth Card

- installation/operation problems 69–70

- phone connection problems 69–70

R

README file 69

Removing the Palm Bluetooth Card 9

S

Safety. *See* Palm Bluetooth Card, usage tips

Security between connections. *See*

Connection security

Send function 38–39

defined 72

Short Messaging Services. *See* SMS

SMS

defined 7, 23, 72

Switching between a phone connection and a wireless LAN access point connection 22

T

Tap dialing. *See* Address book tap dialing

Technical support 69

Telephony features 23–25

Address book tap dialing 23

Palm WAP Browser 23

SMS 23

web clipping application 24

Telephony services

defined 7

e-mail 23

Timeout setting, changing 53–54

Troubleshooting 69–70

Trusted devices

adding trusted devices 42, 44

deleting trusted devices 42, 43–44

passkeys 67–68

viewing and managing trusted devices 43

Trusted pairs 67–68

creating with a GPRS network 57

creating with a laptop computer 50

creating with a non-GSM phone 55–56

creating with a phone using the Bluetooth application 15

creating with a phone using the Connection Preferences screen 47

creating with a wireless LAN access

point 51

defined 72

encryption 67

U

Usage environments 65

User cache

enabling/disabling 44–45

in BlueBoard application 30

in BlueChat application 34

W

WAP browser. *See* Palm WAP Browser

Web clipping application 24, 72

Web clipping application files 8

Wireless LAN access point

accessing the Internet 39

connecting with using the Bluetooth application 20–21

connecting with using the Connection Preferences screen 50–51

creating a trusted pair 21, 51

defined 3, 72

e-mail 39

features 39

locations 39

switching between a phone connection and a wireless LAN access point connection 22

switching from one wireless LAN access point connection to another 60–61

using the Palm WAP Browser 39

using web clipping applications 39